



# The Census & Redistricting Past & Present October 2009

Patricia Lowrey-Dufour  
Senior Legislative Analyst  
House and Governmental Affairs

# Why?

- Article III, Section 6 of the Constitution of La.
- Apportionment of Congress & the Subsequent redistricting involved
- 14<sup>th</sup> Amendment of the U.S. Constitution

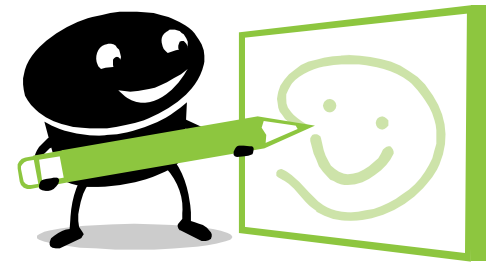


# Reapportionment/Redistricting

- Reapportionment means



- Redistricting means



# Proposed Timeline For Redistricting



- **April 1, 2010:** Census Day
- **December 2010:** President of the U.S. notified of the population of each state
- **January 2011:** State Informed About Number of Congressional Seats allocated to Louisiana
- **February \_\_, 2011:** Census Data is delivered to the Legislature
- **February \_\_, 2011:** Committee hearing on Census data
- **February \_\_-March \_\_, 2011:** Public Hearings around the state

# Timeline For Redistricting (Cont.)

- **April \_\_ – \_\_, 2011:** Proposed Extraordinary Session to establish new Legislative, Congressional, Supreme Court, Public Service Commission, and BESE districts
- **April 25 - June 23, 2011:** Regular Session
- **End of April-May 2, 2011:** Proposed deadline for Submission of Plans for preclearance
- **August 29, 2011:** Deadline for SOS to receive notice of preclearance of Legislative plans (R.S. 18:1942)
- **September 6 - 8, 2011:** Qualifying dates for Legislative & BESE elections

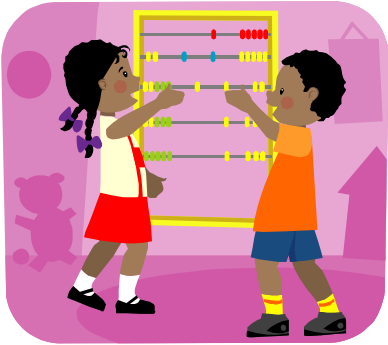




# Timeline For Redistricting (Cont.)

- **October 22, 2011:** Primary Election for members of the legislature and elected BESE members
- **November 19, 2011:** General Election
- **December 31, 2011:** Article III, §6 deadline for the Legislature to redistrict itself
- **January 9, 2012:** Inauguration Day
- **August 25, 2012:** First Party Primary for Congress
- **October 6, 2012:** Open Primary Election for Supreme Court and Public Service Commission (staggered terms) and Second Party Primary for Congress
- **November 6, 2012:** General Election





# The 2010 Census

- **Primary Purpose:** A count of persons in each state as of April 1, 2010, for the apportionment of Representatives in Congress
- **Secondary Purpose: Redistricting**
  - Public Law 94-171 requires the Census Bureau to report population data by various geographic areas
- **Other Purposes: Making public policy decisions and fund allocation**
  - Census data directly affects how more than \$400 billion per year in federal and state funding is allocated to communities for neighborhood improvements, public health, education, transportation and much more. That's more than \$4 trillion over a 10-year period.



# 2010 Census Form



## Asks Four General Questions about the Household:

- If the housing unit is owned or rented
- Telephone number
- How many people live in the residence
- If any additional people who lived at the residence on April 1, 2010, were not included

## Asks the following Questions regarding each household member:

- Name
- Sex
- Age/date of birth
- Relationship to the person who owns or rents this residence
- Hispanic origin
- Race
- Does this person sometimes live or stay somewhere else



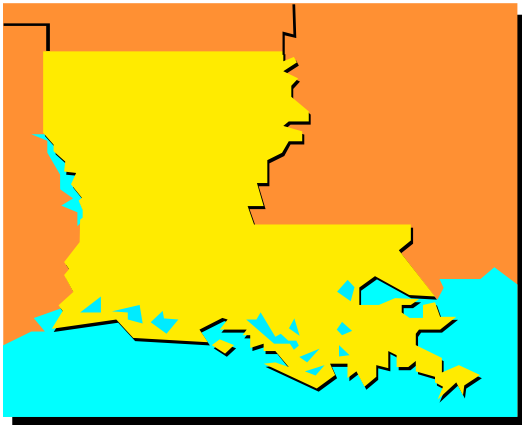
# Public Law 94-171

## Census Redistricting Data Program

### Two primary components:

➤ Geography

➤ Population by Geographic Area





# Census Geography Component

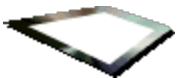
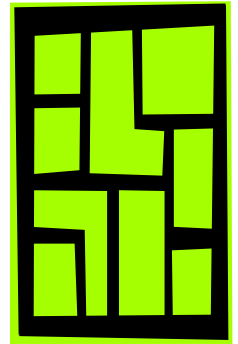


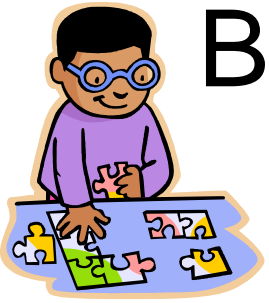
- Master Address File (MAF)
- Topologically Integrated Geographic Encoding and Referencing System (TIGER)—The Census Bureau's Geographic Information System (GIS)
- The Census Bureau is working to enhance & improve MAF/TIGER by bringing them into alignment with true GPS coordinates



# Census Population is reported by Geographic Area

- Parishes
- Legislative districts
- Municipalities & Census Designated Places
  - Census Tracts
  - Voting Districts (Precincts)
  - Census Block Groups
  - Census Blocks





# Building Blocks For Legislatively Drawn Plans

- The Legislature uses precincts as the building blocks for redistricting plans
- Parish Governing Authorities are required to use census block boundaries as the boundaries for precincts



# P.L. 94-171 Data Includes the Following Tabulations By Precinct

- **Total Population**
- **Voting Age Population (over 18)**
- **Racial Data**





# Census Population Data

- 263 Potential Categories of population for each census block. These categories are as follows:
- Those Age 18 and Over (Voting Age Population/VAP)
- Those under 18
- Those of Hispanic or Latino origin
- 63 Potential Racial Categories: 5 single race categories: White, Black, American Indian, Asian, Native Hawaiian and Other Pacific Islander, and Some other Race. People may report being any combination of races up to all six.



# Other Database Information

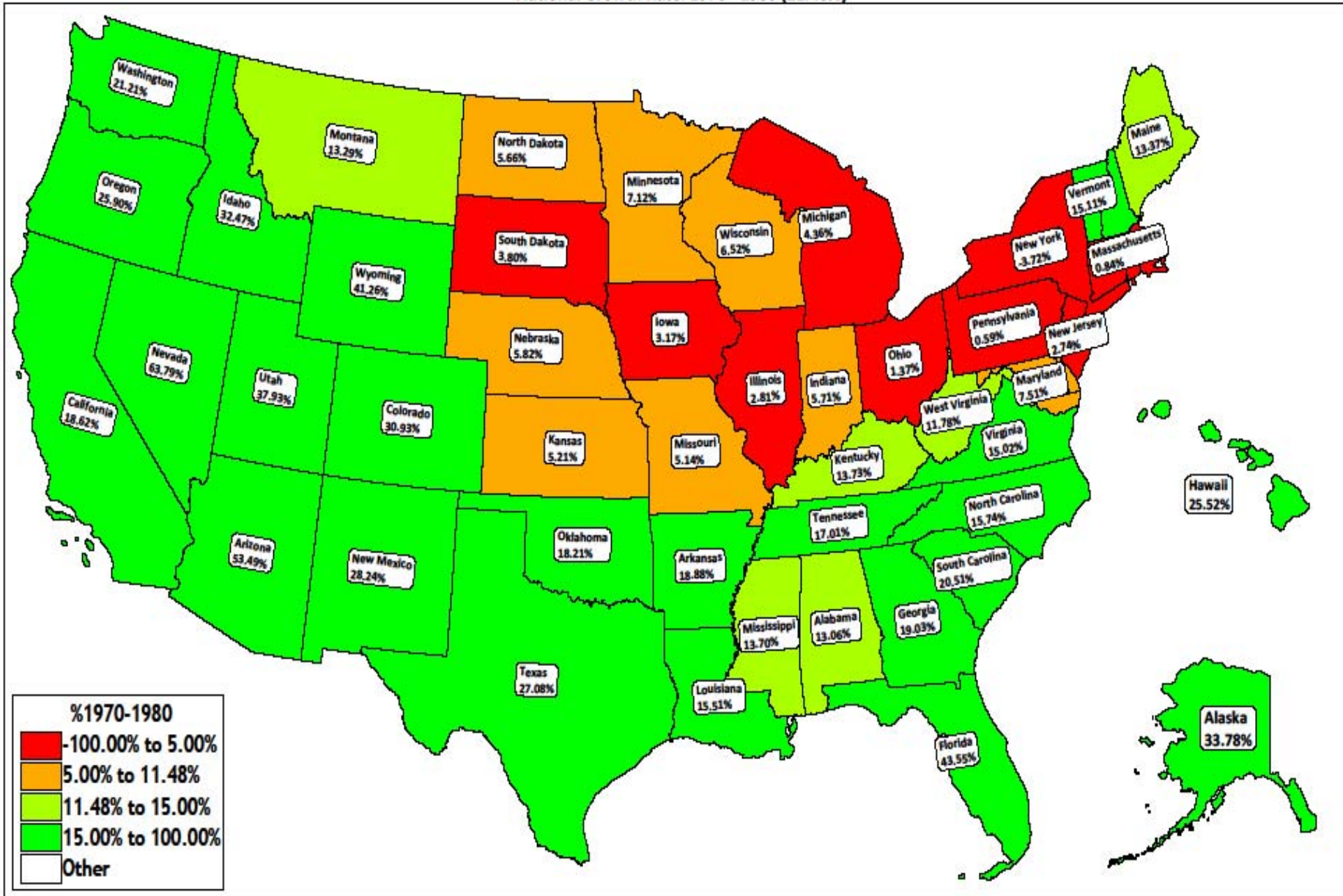
- Voter registration



- Election History for Statewide Races

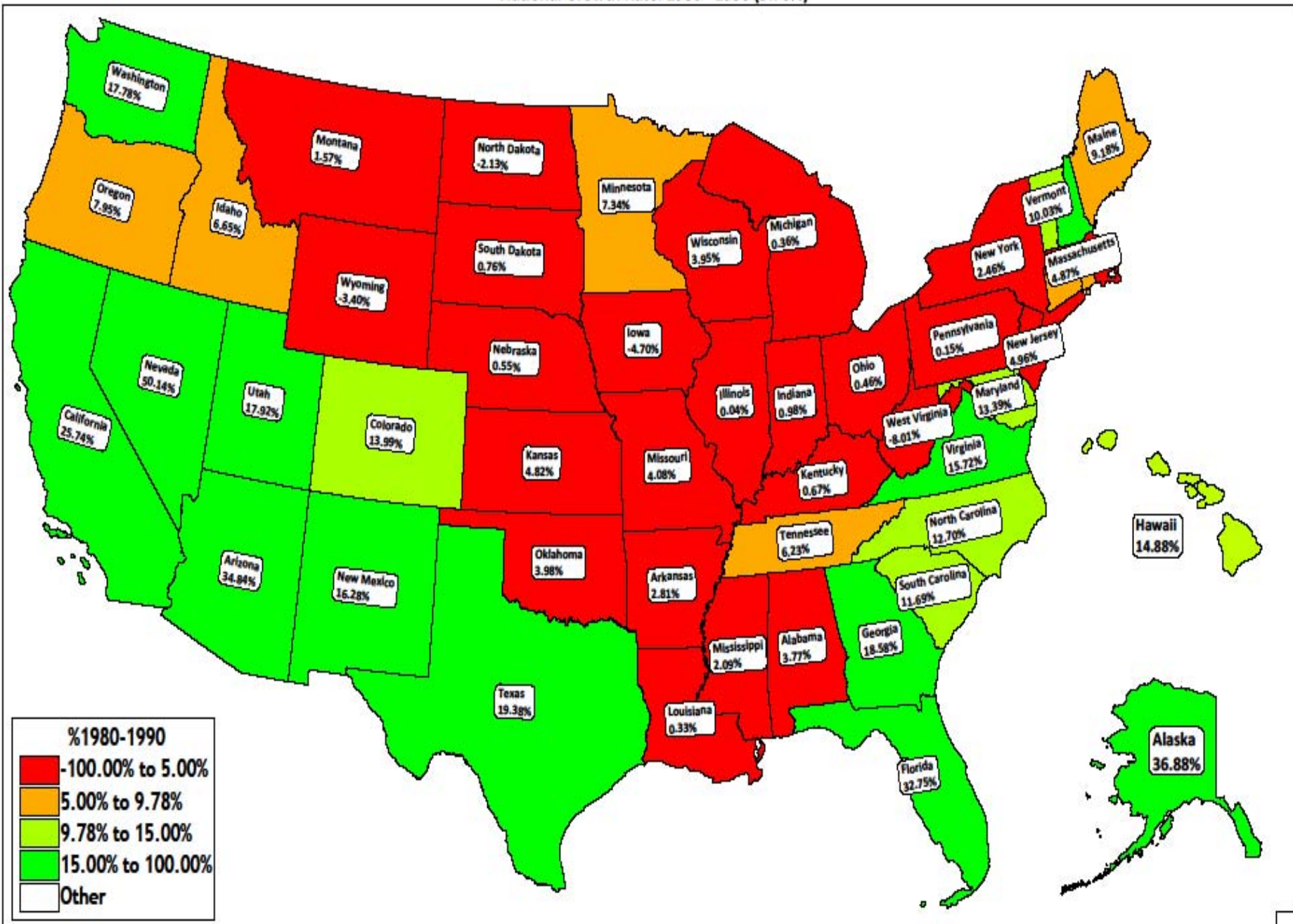


**National Growth Rate: 1970 - 1980 (11.48%)**

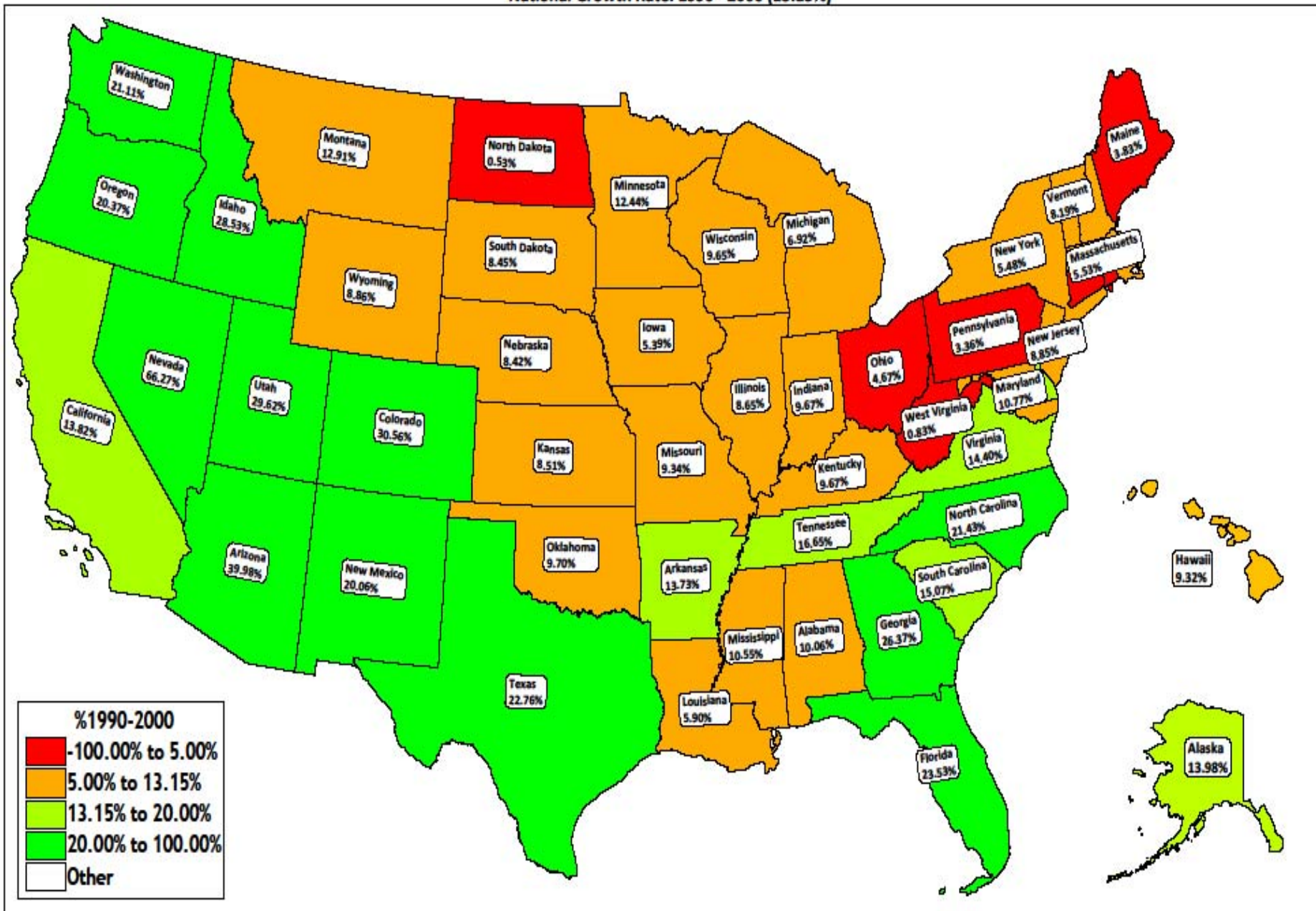




# National Growth Rate: 1980 - 1990 (9.78%)

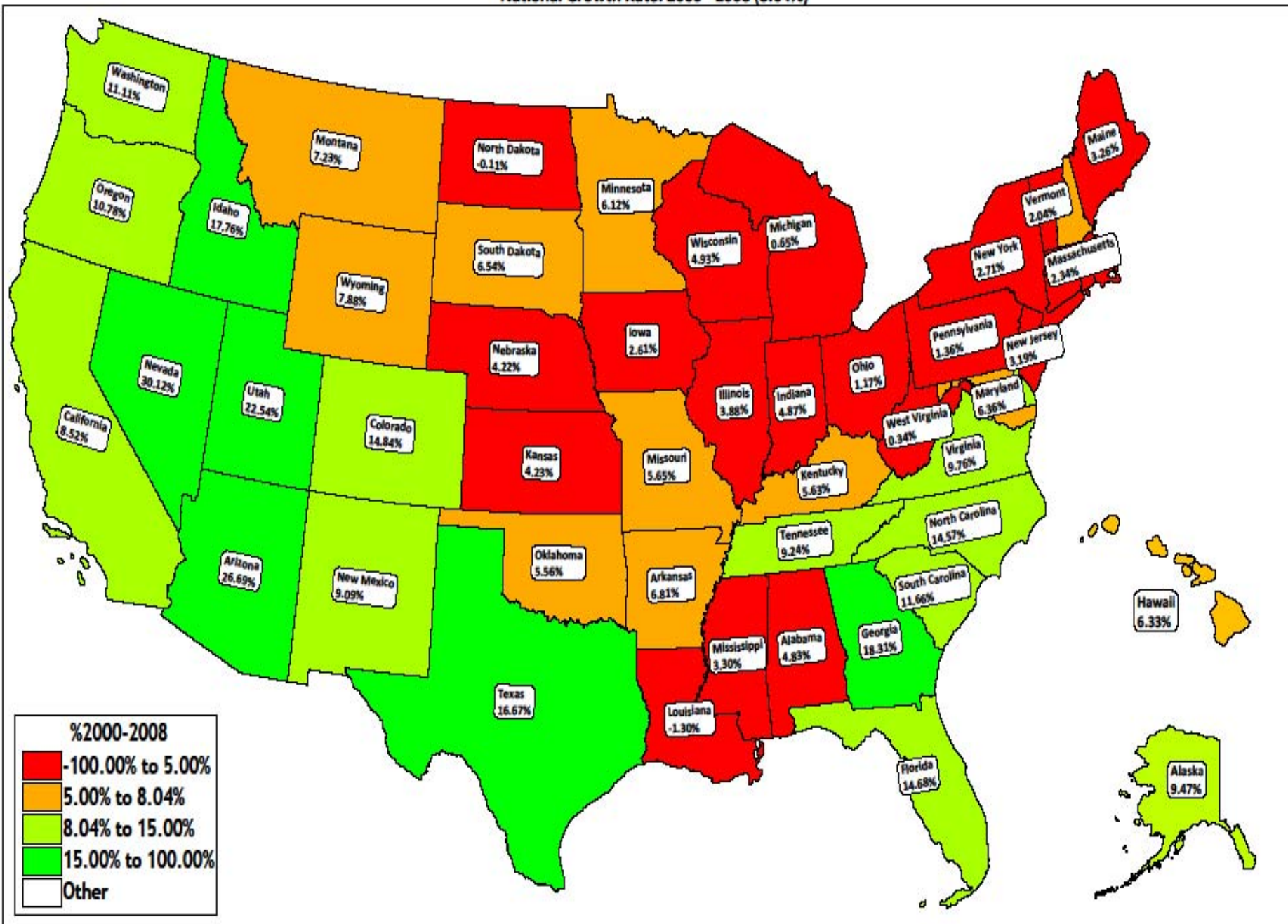


National Growth Rate: 1990 - 2000 (13.15%)

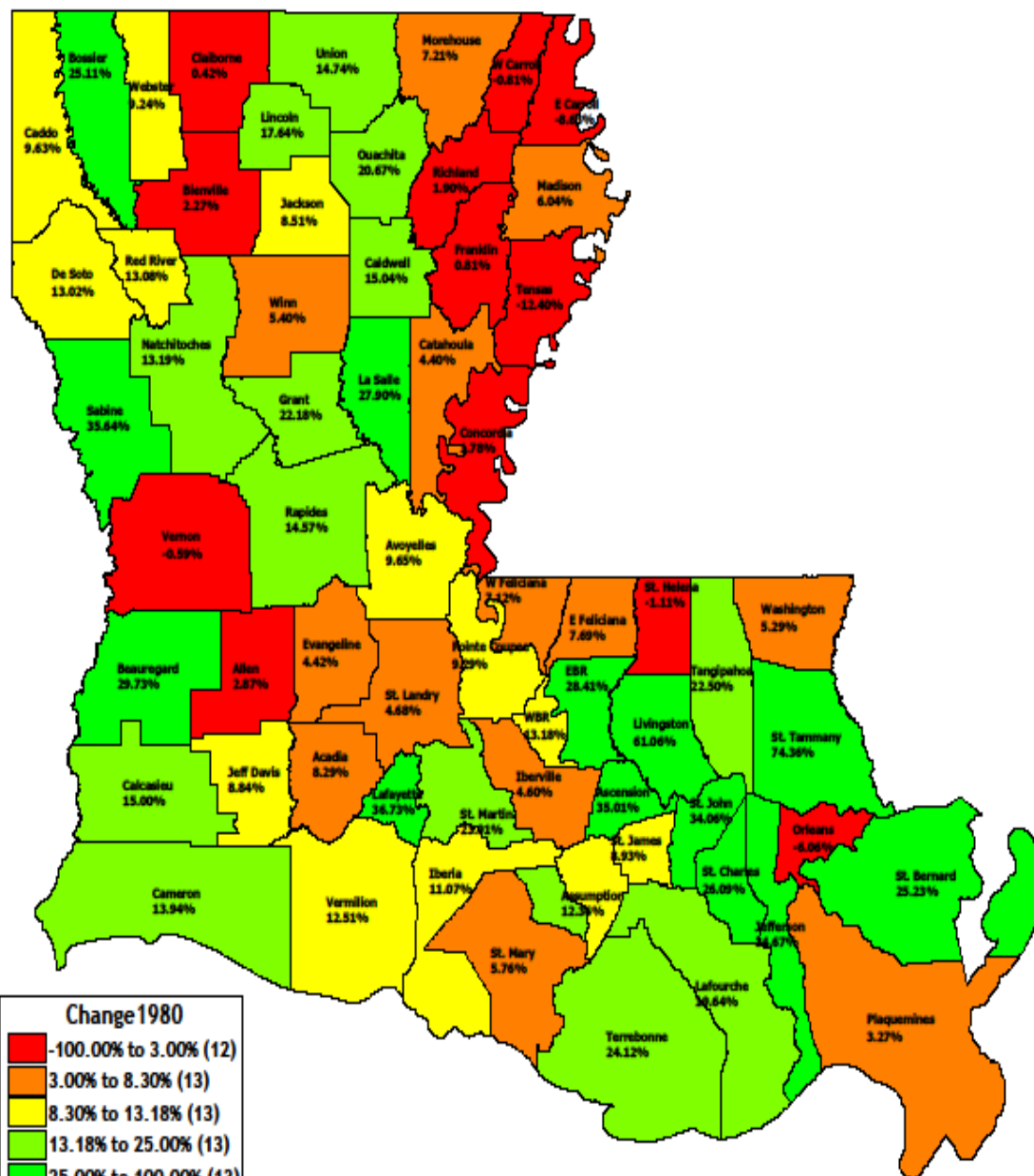




National Growth Rate: 2000 - 2008 (8.04%)

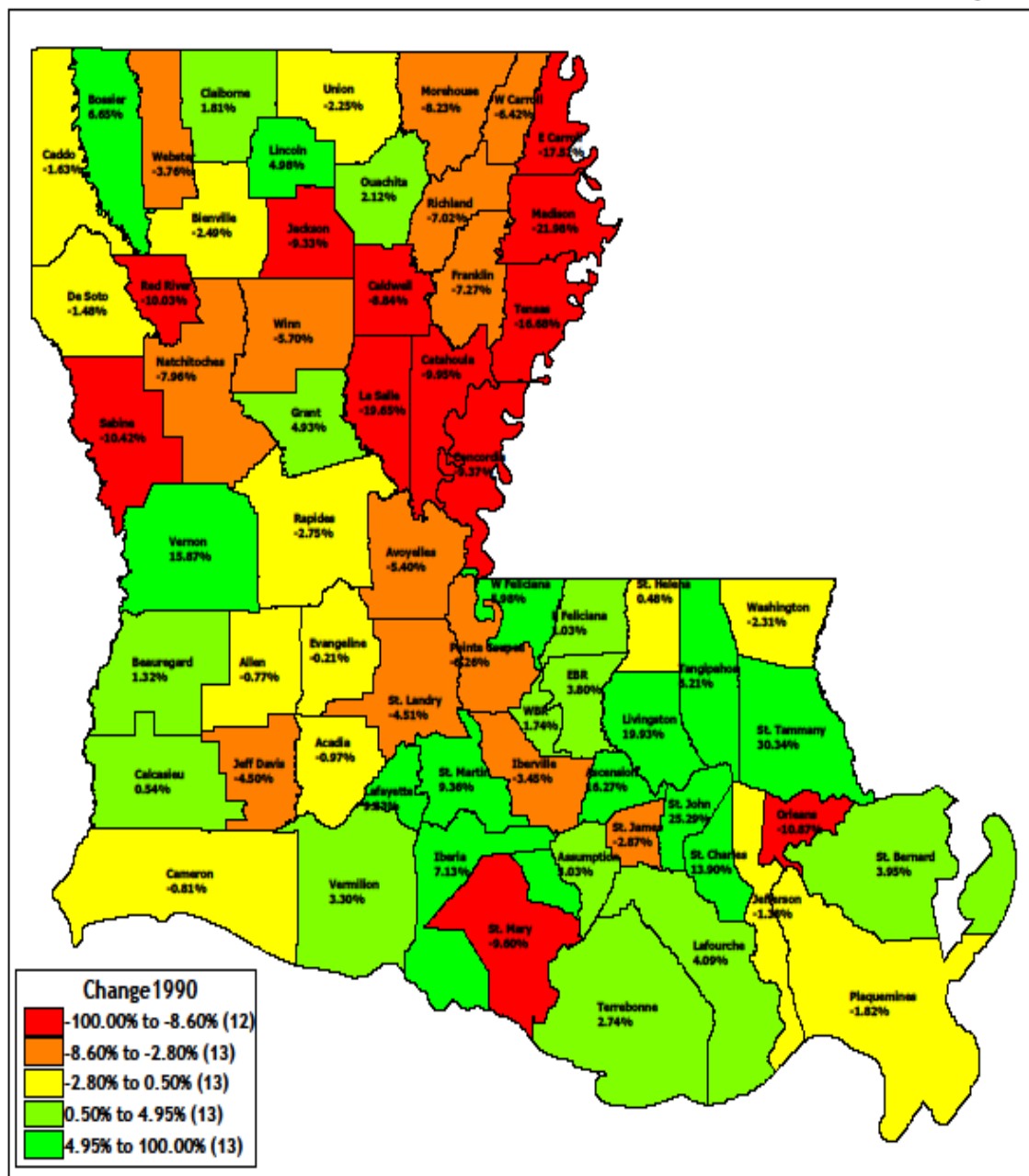


# Parish - 1970 To 1980 Census Population Change



Parish1	POP1	CHANGE1	Parish2	POP2	CHANGE2
Orleans	557,515	-35,956	De Soto	25,727	2,963
Tensas	8,525	-1,207	Grant	16,703	3,032
E Carroll	11,772	-1,112	St. Mary	64,253	3,501
Vernon	53,475	-319	Avoyelles	41,393	3,642
St. Helena	9,827	-110	Webster	43,631	3,692
W Carroll	12,922	-106	La Salle	17,004	3,709
Claiborne	17,095	71	St. Landry	84,128	3,764
Franklin	24,141	195	Acadia	56,427	4,318
Bienville	16,387	363	Natchitoches	39,863	4,644
Concordia	22,961	403	Vermilion	48,456	5,387
Richland	22,187	413	Lincoln	39,763	5,963
Catahoula	12,287	518	Iberia	63,752	6,355
Allen	21,390	596	Sabine	25,280	6,642
W Feliciana	12,186	810	Beauregard	29,692	6,804
Plaquemines	26,049	824	St. Charles	37,259	7,709
Winn	17,253	884	St. Martin	40,214	7,761
Madison	15,975	910	St. John	31,924	8,111
Cameron	9,336	1,142	St. Bernard	64,097	12,912
Red River	10,433	1,207	Ascension	50,066	12,982
E Feliciana	19,015	1,358	Lafourche	82,483	13,542
Jackson	17,321	1,358	Tangipahoa	80,698	14,823
Caldwell	10,761	1,407	Bossier	80,721	16,202
Evangeline	33,343	1,411	Rapides	135,282	17,204
Iberville	32,159	1,413	Terrebonne	94,393	18,344
St. James	21,495	1,762	Calcasieu	167,223	21,808
Pointe Coupee	24,045	2,043	Caddo	252,358	22,174
Washington	44,207	2,220	Livingston	58,806	22,295
WBR	19,086	2,222	Ouachita	139,241	23,854
Morehouse	34,803	2,340	Lafayette	150,017	40,301
Assumption	22,084	2,430	St. Tammany	110,869	47,284
Jeff Davis	32,168	2,614	EBR	366,191	81,024
Union	21,167	2,720	Jefferson	454,592	117,024

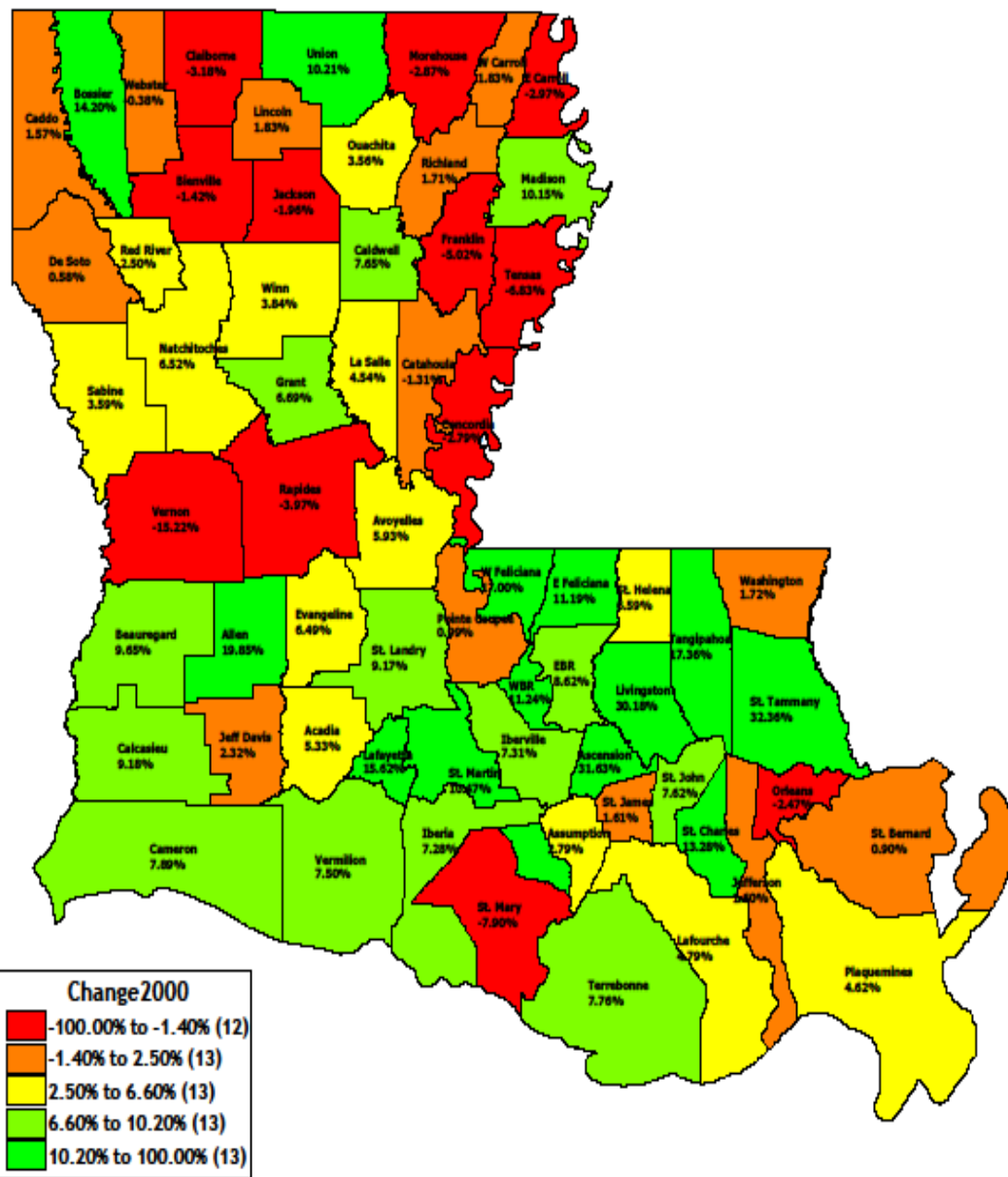
# Parish - 1980 To 1990 Census Population Change



PARISH1	POP1	CHANGE1	PARISH2	POP2	CHANGE2
Orleans	496,938	-60,577	Bienville	15,979	-408
Jefferson	448,306	-6,286	De Soto	25,346	-381
St. Mary	58,086	-6,167	Allen	21,226	-164
Caddo	248,253	-4,105	Cameron	9,260	-76
St. Landry	80,331	-3,797	Evangeline	33,274	-69
Rapides	131,556	-3,726	St. Helena	9,874	47
Madison	12,463	-3,512	E Feliciana	19,211	196
La Salle	13,662	-3,342	Claiborne	17,405	310
Natchitoches	36,689	-3,174	WBR	19,419	333
Morehouse	31,938	-2,865	Beauregard	30,083	391
Sabine	22,646	-2,634	Assumption	22,753	669
Avoyelles	39,159	-2,234	W Feliciana	12,915	729
Concordia	20,828	-2,153	Grant	17,526	823
E Carroll	9,709	-2,063	Calcasieu	168,134	911
Franklin	22,387	-1,754	Vermilion	50,055	1,597
Webster	41,989	-1,642	Lincoln	41,745	1,982
Jackson	15,705	-1,616	St. Bernard	66,631	2,534
Richland	20,629	-1,558	Terrebonne	96,982	2,589
Pointe Coupee	22,540	-1,505	Ouachita	142,191	2,950
Jeff Davis	30,722	-1,446	Lafourche	85,860	3,377
Tensas	7,103	-1,422	St. Martin	43,978	3,764
Catahoula	11,065	-1,222	Iberia	68,297	4,545
Iberville	31,049	-1,110	Tangipahoa	85,709	5,011
Red River	9,387	-1,046	St. Charles	42,437	5,178
Washington	43,185	-1,022	Bossier	86,088	5,367
Winn	16,269	-984	St. John	39,996	8,072
Caldwell	9,810	-951	Ascension	58,214	8,146
W Carroll	12,093	-829	Vernon	61,961	8,486
St. James	20,879	-616	Livingston	70,526	11,720
Acadia	55,882	-545	EBR	380,105	13,914
Union	20,690	-477	Lafayette	164,762	14,745
Plaquemines	25,575	-474	St. Tammany	144,508	33,639

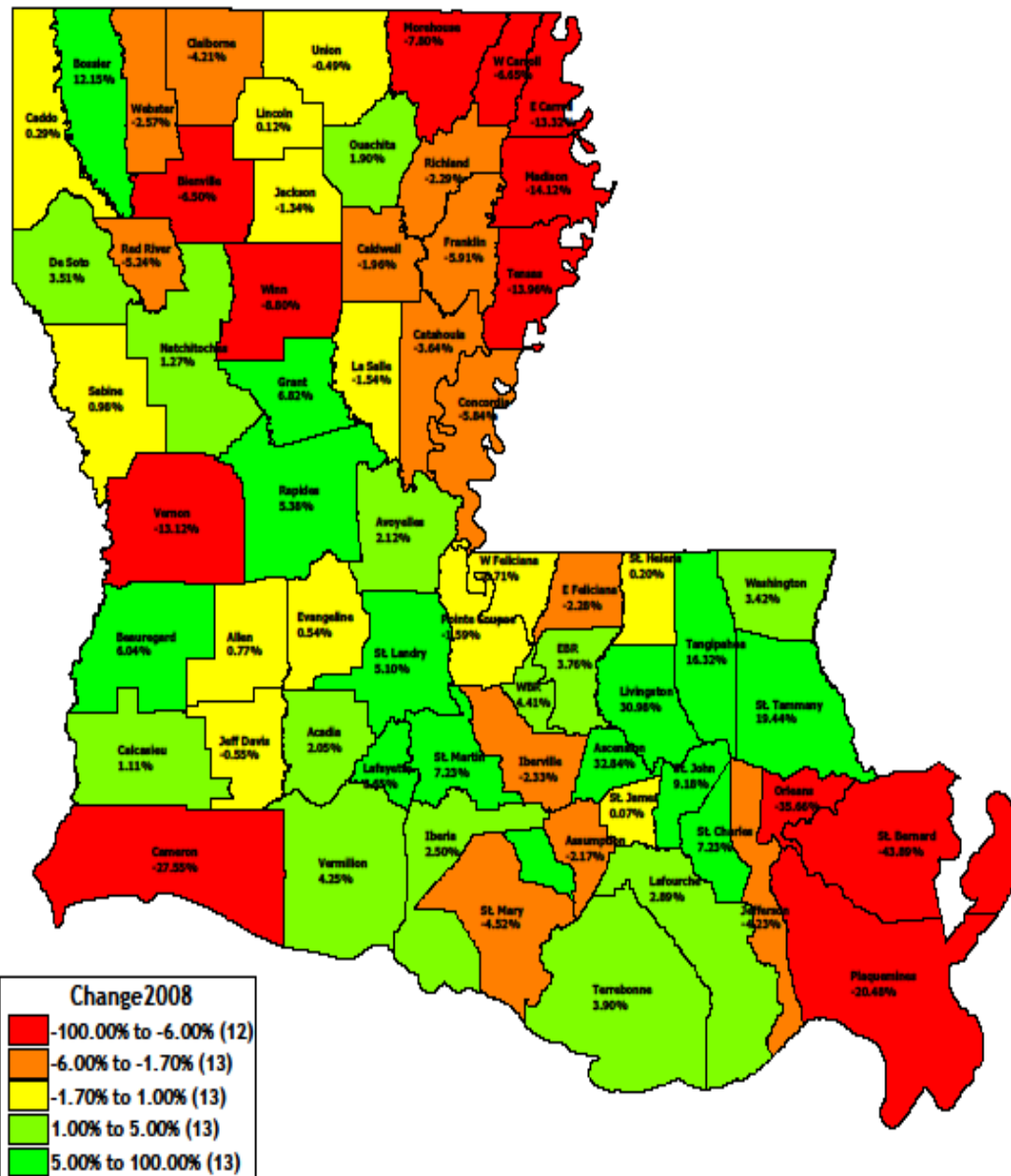


# Parish - 1990 To 2000 Census Population Change



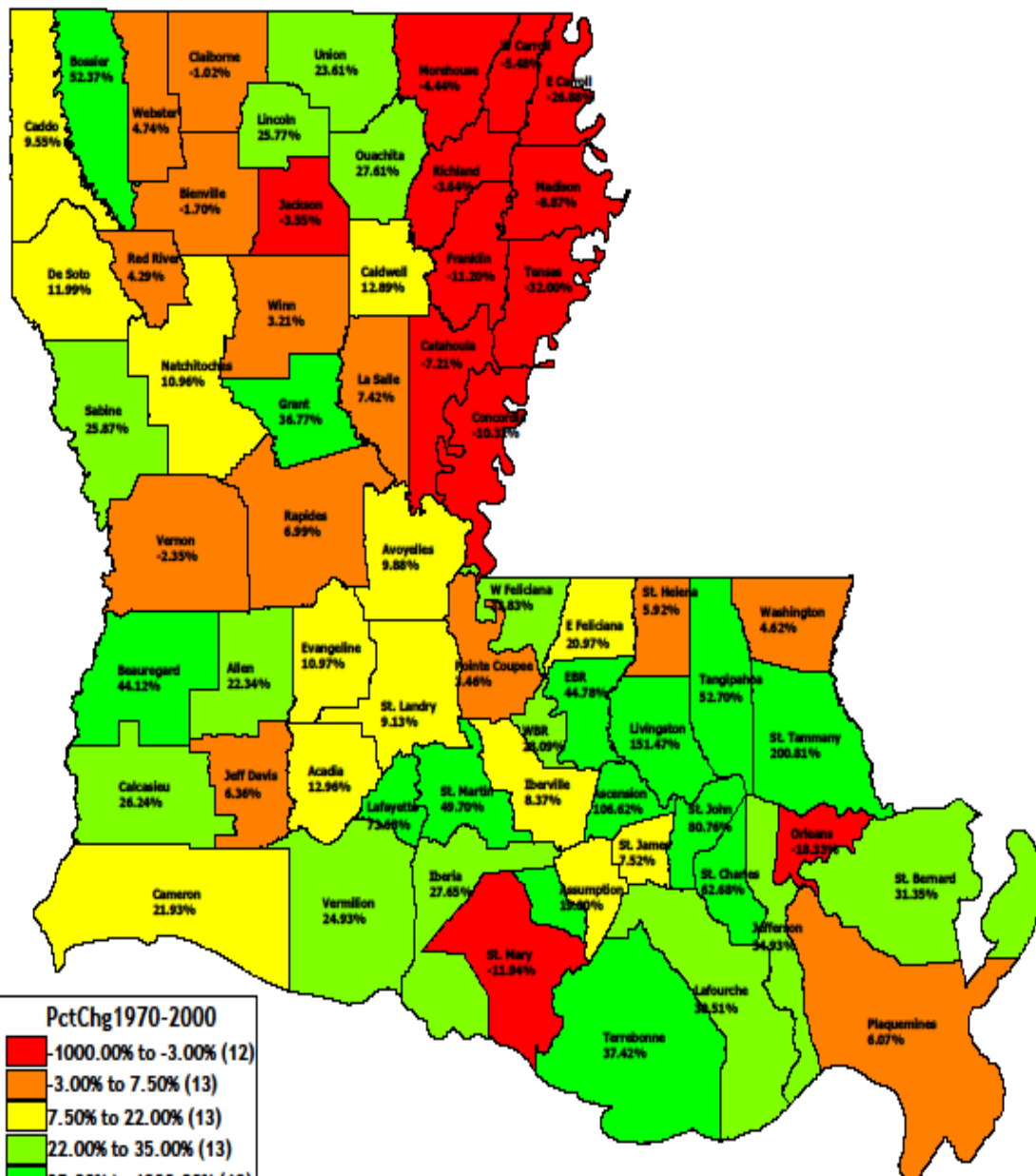
PARISH1	POP1	CHANGE1	PARISH2	POP2	CHANGE2
Orleans	484,674	-12,264	Plaquemines	26,757	1,182
Vernon	52,531	-9,430	Madison	13,728	1,265
Rapides	126,337	-5,219	Union	22,803	2,113
St. Mary	53,500	-4,586	E Feliciana	21,360	2,149
Franklin	21,283	-1,124	Evangeline	35,434	2,160
Morehouse	31,021	-917	WBR	21,601	2,182
Concordia	20,247	-581	W Feliciana	15,111	2,196
Claiborne	16,851	-554	Iberville	33,320	2,271
Tensas	6,618	-485	Avoyelles	41,481	2,322
Jackson	15,397	-308	Natchitoches	39,080	2,391
E Carroll	9,421	-288	Beauregard	32,986	2,903
Bienville	15,752	-227	Acadia	58,861	2,979
Webster	41,831	-158	St. John	43,044	3,048
Catahoula	10,920	-145	Vermilion	53,807	3,752
De Soto	25,494	148	Caddo	252,161	3,908
W Carroll	12,314	221	Lafourche	89,974	4,114
Pointe Coupee	22,763	223	Allen	25,440	4,214
Red River	9,622	235	St. Martin	48,583	4,605
St. James	21,216	337	Iberia	73,266	4,969
Richland	20,981	352	Ouachita	147,250	5,059
St. Bernard	67,229	598	St. Charles	48,072	5,635
La Salle	14,282	620	Jefferson	455,466	7,160
Winn	16,894	625	St. Landry	87,700	7,369
Assumption	23,388	635	Terrebonne	104,503	7,521
St. Helena	10,525	651	Bossier	98,310	12,222
Jeff Davis	31,435	713	Tangipahoa	100,588	14,879
Cameron	9,991	731	Calcasieu	183,577	15,443
Washington	43,926	741	Ascension	76,627	18,413
Caldwell	10,580	750	Livingston	91,814	21,288
Lincoln	42,509	764	Lafayette	190,503	25,741
Sabine	23,459	813	EBR	412,852	32,747
Grant	18,698	1,172	St. Tammany	191,268	46,760

# Parish - 2000 Census To 2008 Census Estimate Population Change



PARISH1	EST1	CHANGE1	PARISH2	EST2	CHANGE2
Orleans	311,853	-172,821	St. Helena	10,546	21
St. Bernard	37,722	-29,507	Lincoln	42,561	52
Jefferson	436,181	-19,285	Evangeline	35,624	190
Vernon	45,639	-6,892	Allen	25,635	195
Plaquemines	21,276	-5,481	Sabine	23,688	229
Cameron	7,238	-2,753	Natchitoches	39,576	496
Morehouse	28,602	-2,419	Caddo	252,895	734
St. Mary	51,083	-2,417	Avoyelles	42,360	879
Madison	11,790	-1,938	De Soto	26,388	894
Winn	15,408	-1,486	WBR	22,553	952
Franklin	20,006	-1,257	Acadia	60,070	1,209
E Carroll	8,166	-1,255	Grant	19,974	1,276
Concordia	19,064	-1,183	Washington	45,430	1,504
Webster	40,754	-1,077	Iberia	75,097	1,831
Bienville	14,728	-1,024	Beauregard	34,978	1,992
Tensas	5,694	-924	Calcasieu	185,618	2,041
W Carroll	11,495	-819	Vermilion	56,096	2,289
Iberville	32,545	-775	Lafourche	92,572	2,598
Claiborne	16,142	-709	Ouachita	150,051	2,801
Assumption	22,881	-507	St. Charles	51,547	3,475
Red River	9,118	-504	St. Martin	52,097	3,514
E Feliciana	20,874	-486	St. John	46,994	3,950
Richland	20,501	-480	Terrebonne	108,576	4,073
Catahoula	10,522	-398	St. Landry	92,173	4,473
Pointe Coupee	22,401	-362	Rapides	133,131	6,794
La Salle	14,062	-220	Bossier	110,250	11,940
Caldwell	10,353	-207	EBR	428,360	15,508
Jackson	15,191	-206	Tangipahoa	117,001	16,413
Jeff Davis	31,263	-172	Lafayette	206,976	16,473
Union	22,692	-111	Ascension	101,789	25,162
W Feliciana	15,003	-108	Livingston	120,256	28,442
St. James	21,231	15	St. Tammany	228,456	37,188

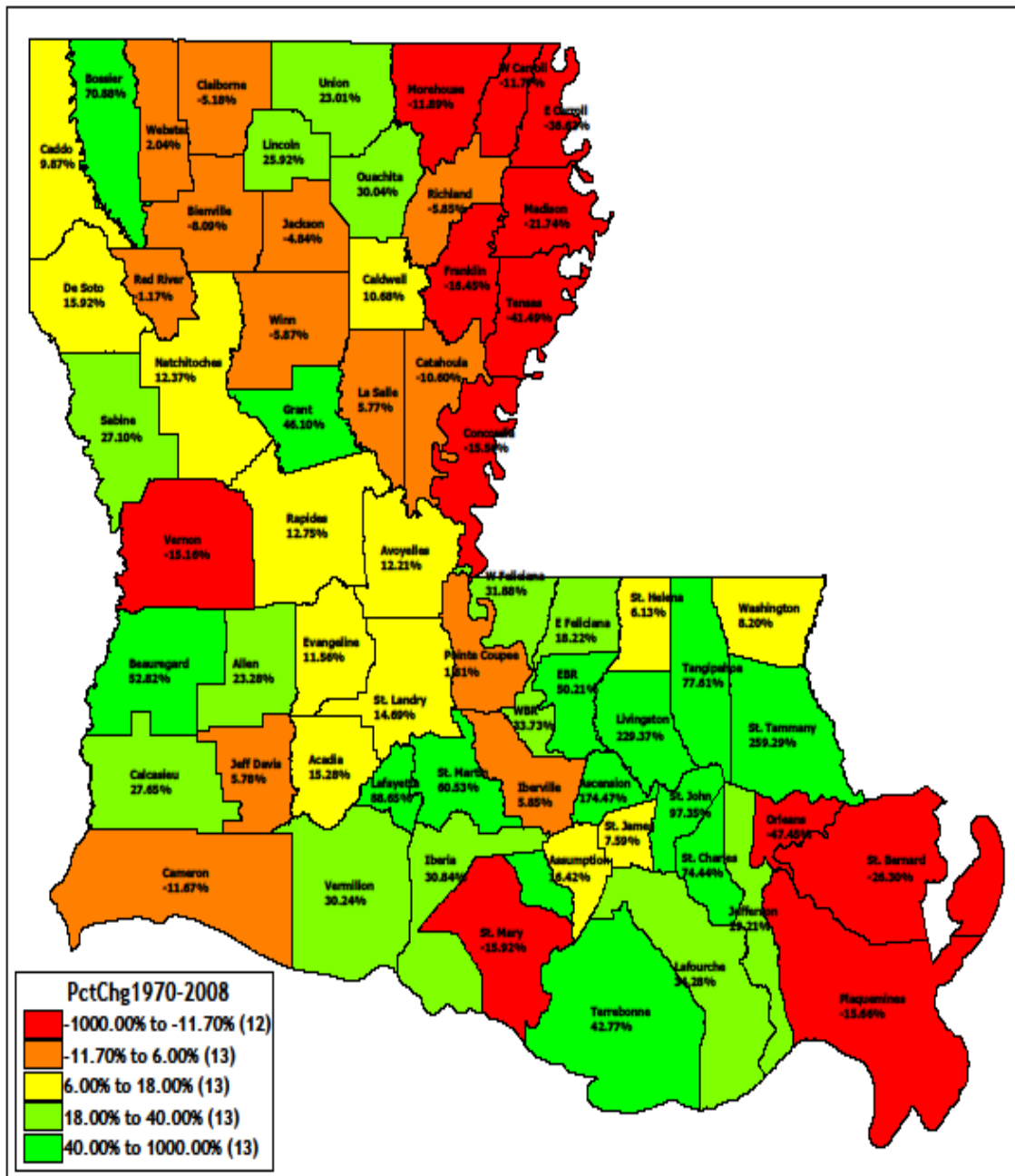
# Parish - 1970 To 2000 Census Population Change



PARISH1	Change1	% Change1	PARISH2	Change2	% Change2
Orleans	-108,797	-18%	Assumption	3,734	19%
St. Mary	-7,252	-12%	W Feliciana	3,735	33%
E Carroll	-3,483	-27%	Natchitoches	3,881	11%
Tensas	-3,114	-32%	Union	4,358	24%
Franklin	-2,683	-11%	Allen	4,648	22%
Concordia	-2,331	-10%	WBR	4,737	28%
Morehouse	-1,442	-4%	Sabine	4,821	26%
Madison	-1,337	-9%	Grant	5,027	37%
Vernon	-1,283	-2%	Acadia	6,752	13%
Catahoula	-849	-7%	St. Landry	7,338	9%
Richland	-793	-4%	Rapides	8,259	7%
W Carroll	-714	-5%	Lincoln	8,709	28%
Jackson	-588	-4%	Beauregard	10,098	44%
Blenville	-272	-2%	Vermillion	10,738	25%
Calcasieu	-173	-1%	Iberia	15,889	28%
Red River	398	4%	St. Bernard	16,044	31%
Winn	525	3%	St. Martin	16,130	50%
St. Helena	588	6%	St. Charles	18,522	83%
Pointe Coupee	761	3%	St. John	19,231	81%
La Salle	987	7%	Lafourche	21,033	31%
Caldwell	1,206	13%	Caddo	21,977	10%
St. James	1,483	8%	Terrebonne	28,454	37%
Plaquemines	1,532	6%	Ouachita	31,883	28%
Cameron	1,797	22%	Bossier	33,791	52%
Jeff Davis	1,881	6%	Tangipahoa	34,713	53%
Webster	1,892	5%	Calcasieu	38,182	26%
Washington	1,939	5%	Ascension	39,541	107%
Iberia	2,574	8%	Livingston	55,303	151%
De Soto	2,730	12%	Lafayette	80,787	74%
Evangeline	3,502	11%	Jefferson	117,898	35%
E Feliciana	3,703	21%	St. Tammany	127,683	201%
Avoyelles	3,730	10%	EBR	127,685	45%

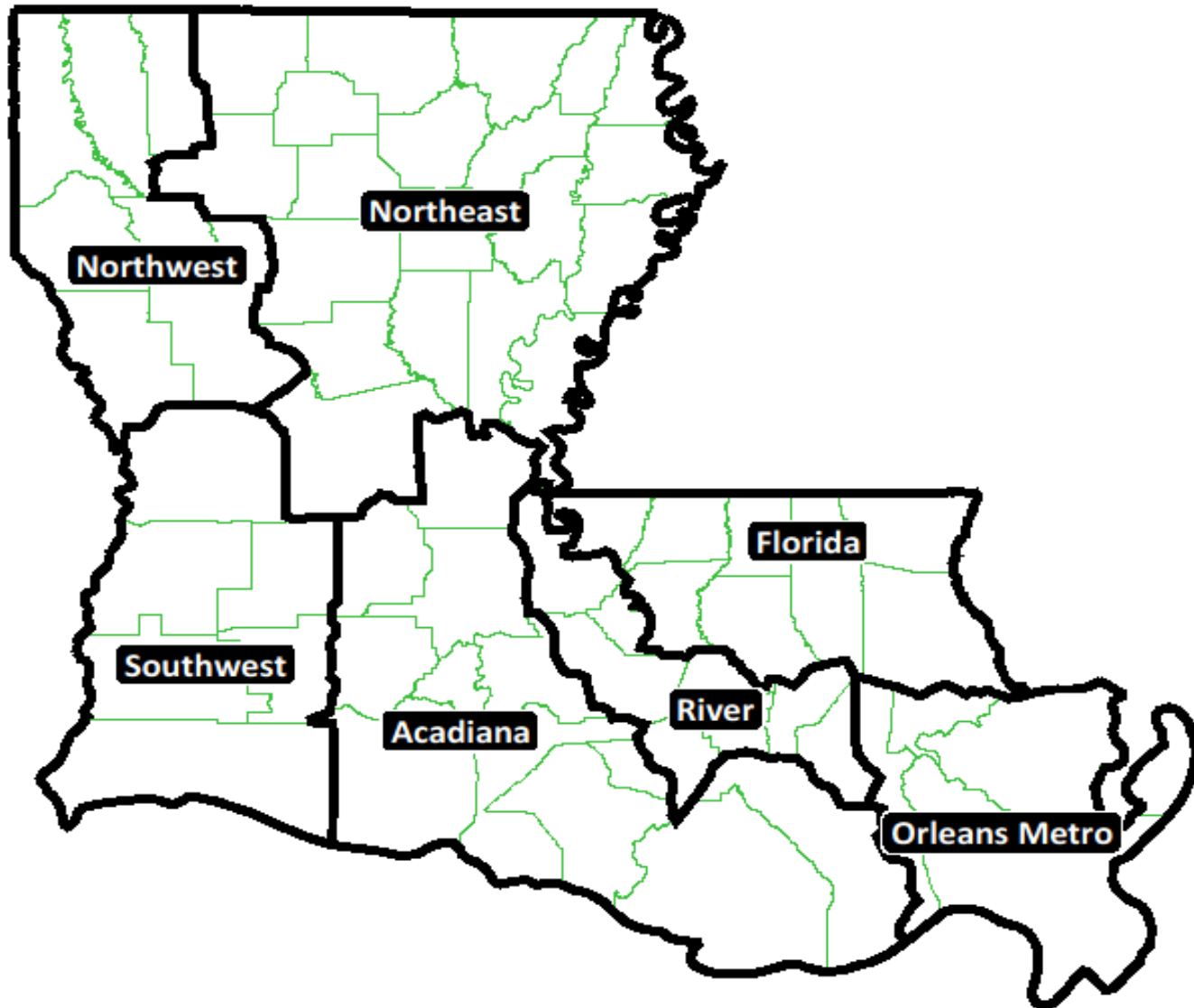


# Parish - 1970 Census To 2008 Census Estimate Population Change

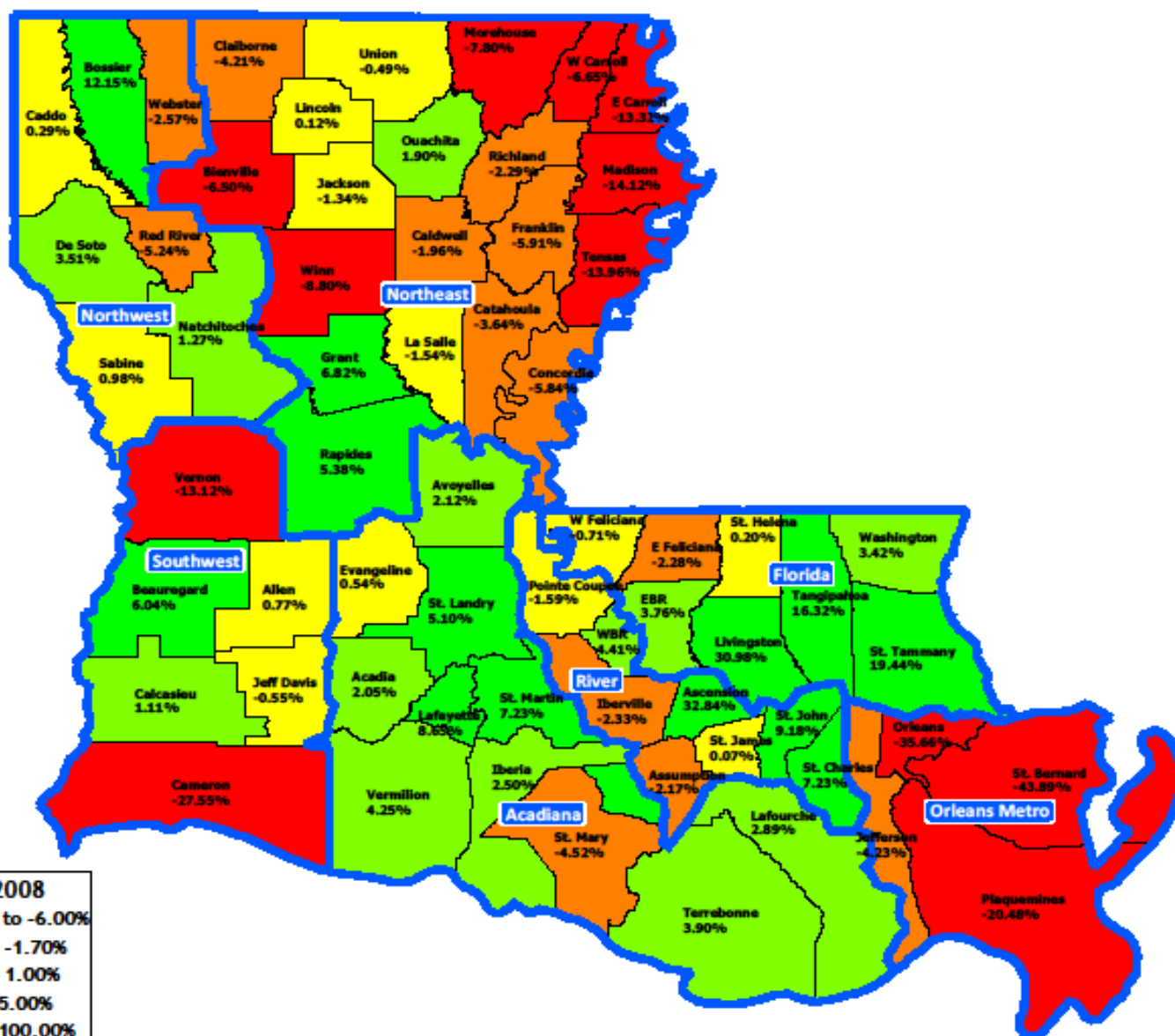


PARISH1	Change1	% Change1	PARISH11	Change2	% Change2
Orleans	-281,818	-47%	W Feliciana	3,627	32%
St. Bernard	-13,463	-26%	Evangeline	3,692	12%
St. Mary	-9,689	-16%	Union	4,245	23%
Vernon	-8,155	-15%	Natchitoches	4,357	12%
E Carroll	-4,718	-37%	Avoyelles	4,609	12%
Tensas	-4,038	-41%	Allen	4,841	23%
Plaquemines	-3,949	-16%	Sabine	5,050	27%
Franklin	-3,940	-16%	WBR	5,689	34%
Morehouse	-3,861	-12%	Grant	6,303	46%
Concordia	-3,514	-16%	Acadia	7,961	15%
Madison	-3,275	-22%	Lincoln	8,761	26%
W Carroll	-1,533	-12%	St. Landry	11,809	15%
Bienville	-1,296	-8%	Beauregard	12,090	53%
Richland	-1,273	-6%	Vermilion	13,025	30%
Catahoula	-1,247	-11%	Rapides	15,053	13%
Winn	-961	-6%	Iberia	17,700	31%
Cameron	-956	-12%	St. Martin	19,644	61%
Calborne	-882	-5%	St. Charles	21,997	74%
Jackson	-772	-5%	Caddo	22,711	10%
Red River	-108	-1%	St. John	23,181	97%
Pointe Coupee	399	2%	Lafourche	23,631	34%
St. Helena	609	6%	Terrebonne	32,527	43%
La Salle	767	6%	Ouachita	34,664	30%
Webster	815	2%	Calcasieu	40,203	28%
Caldwell	999	11%	Bossier	45,731	71%
St. James	1,498	8%	Tangipahoa	51,126	78%
Jeff Davis	1,709	6%	Ascension	64,703	174%
Iberville	1,799	6%	Livingston	83,745	229%
E Feliciana	3,217	18%	Lafayette	97,260	89%
Assumption	3,227	16%	Jefferson	98,613	29%
Washington	3,443	8%	EBR	143,193	50%
De Soto	3,624	16%	St. Tammany	164,871	259%

# Louisiana Regions



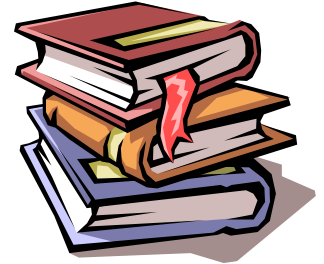
### Parish - 2000 Census To 2008 Census Estimate Population Change With Regions



# BESE District Population

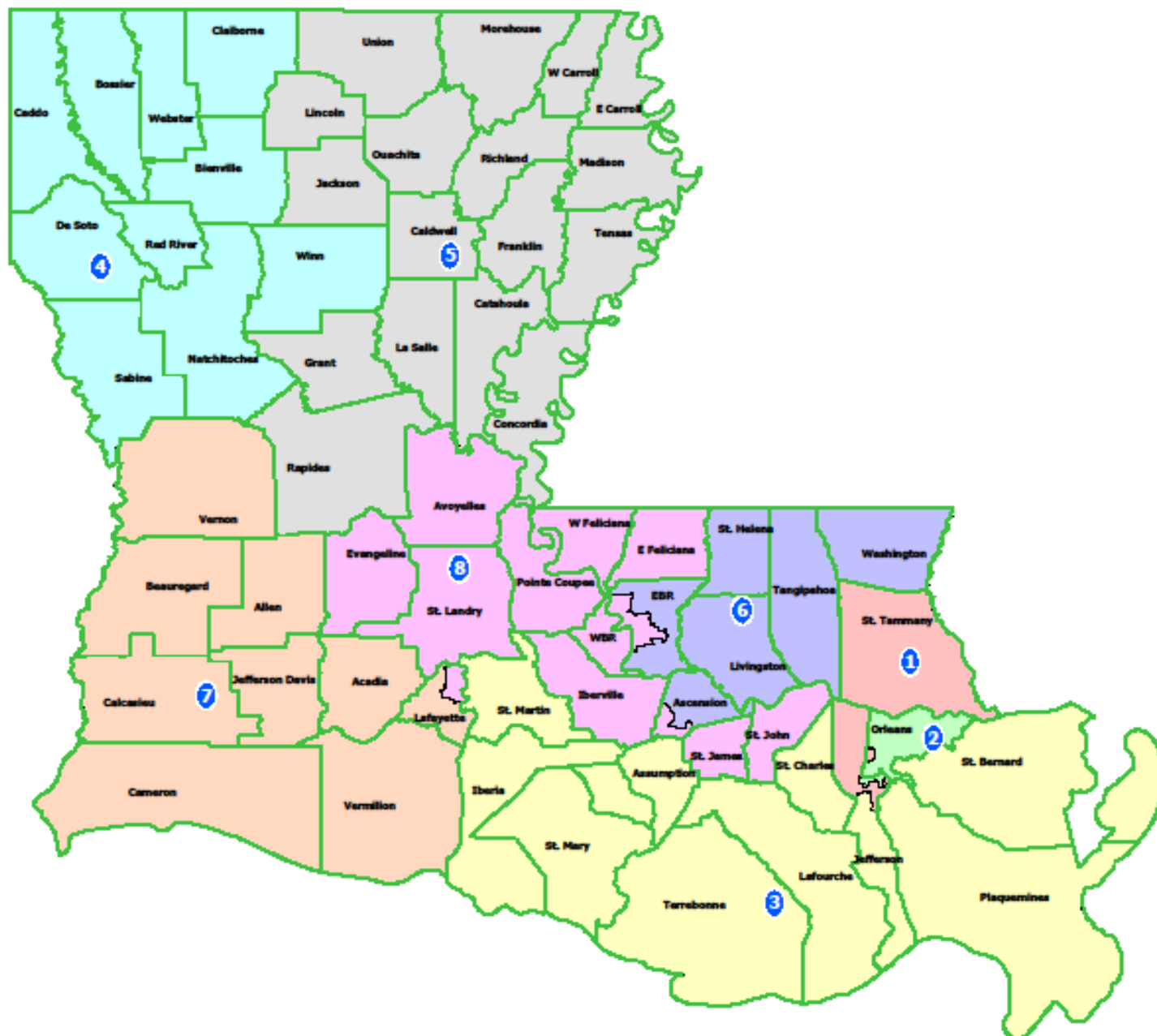
## 1990s v. 2000s\*

\*The 2008 figure is based upon the 2008 Census Estimate and the 2010 figure is based upon the Census Projection



- 1990 Ideal: 527,496
- 2000 Ideal: 558,622
- 2008 Ideal: 551,349\*
- 2010 Ideal: 576,584\*

## BESE Districts





# Supreme Court Ideal District Population 1990s v. 2000s\*

\*The 2008 figure is based upon the 2008 Census Estimate and the 2010 figure is based upon the Census Projection

1990 Ideal: 602,853

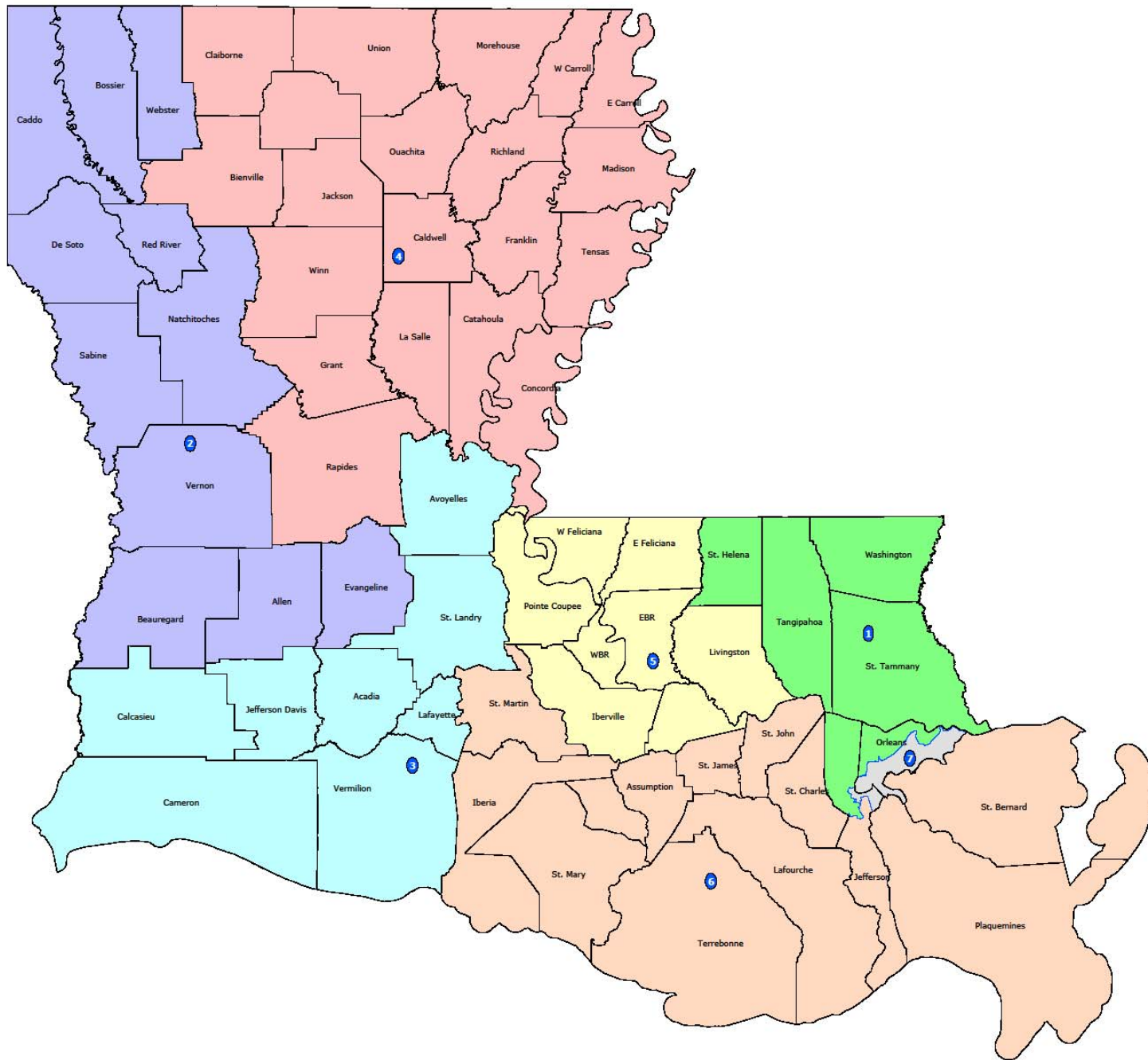
2000 Ideal: 638,425\*\*

2008 Ideal: 630,113\*

2010 Ideal: 658,954\*

(\*\*Note: Supreme Court Districts were not redrawn following the 2000 Census)

# LA Supreme Court





# **Public Service Commission Ideal District Population 1990s v. 2000s\***

\*The 2008 figure is based upon the 2008 Census Estimate and the  
2010 figure is based upon the Census Projection

1990 Ideal: 843,994

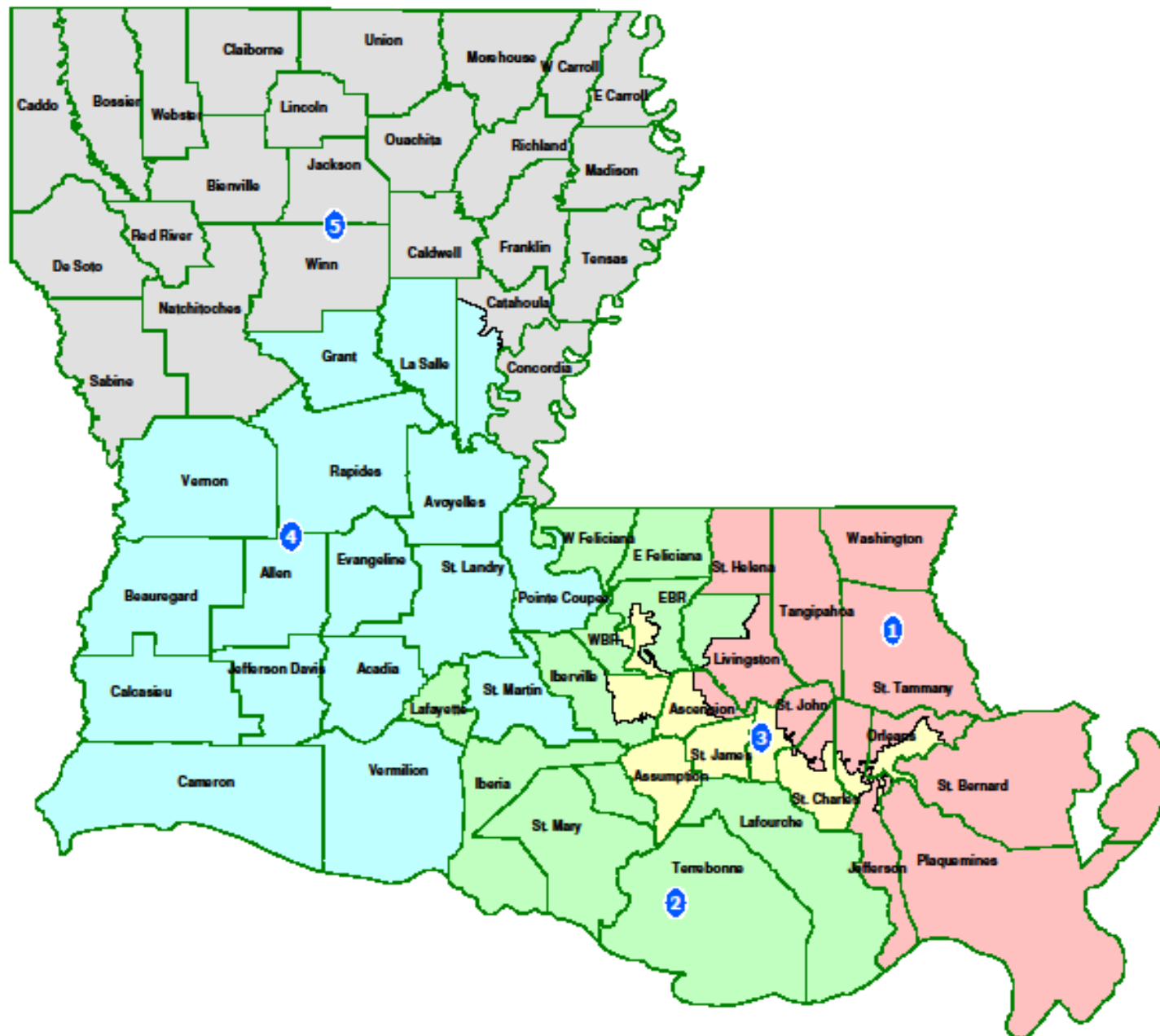
2000 Ideal: 893,795

2008 Ideal: 882,159\*

2010 Ideal: 922,535\*



# PSC Districts



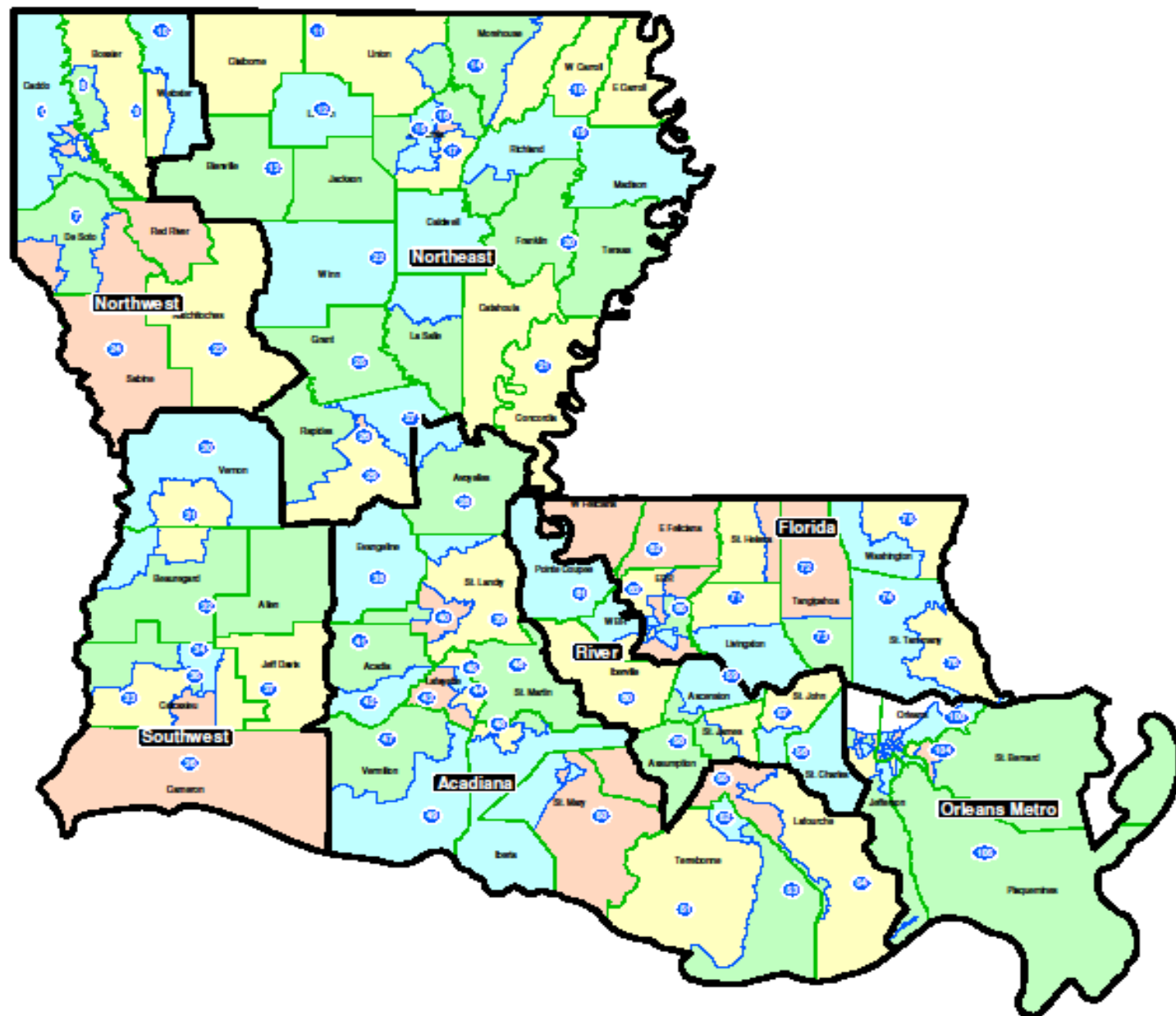
# House District Ideal Population Thru the Decades\*

\*The 2008 figure is based upon the 2008 Census Estimate and the 2010 figure is based upon the Census Projection



- 1970 Ideal: 34,697
- 1980 Ideal: 40,037
- 1990 Ideal: 40,190
- 2000 Ideal: 42,561
- 2008 Ideal: 42,007\*
- 2010 Ideal: 43,930\*

# House 1970 - Regions

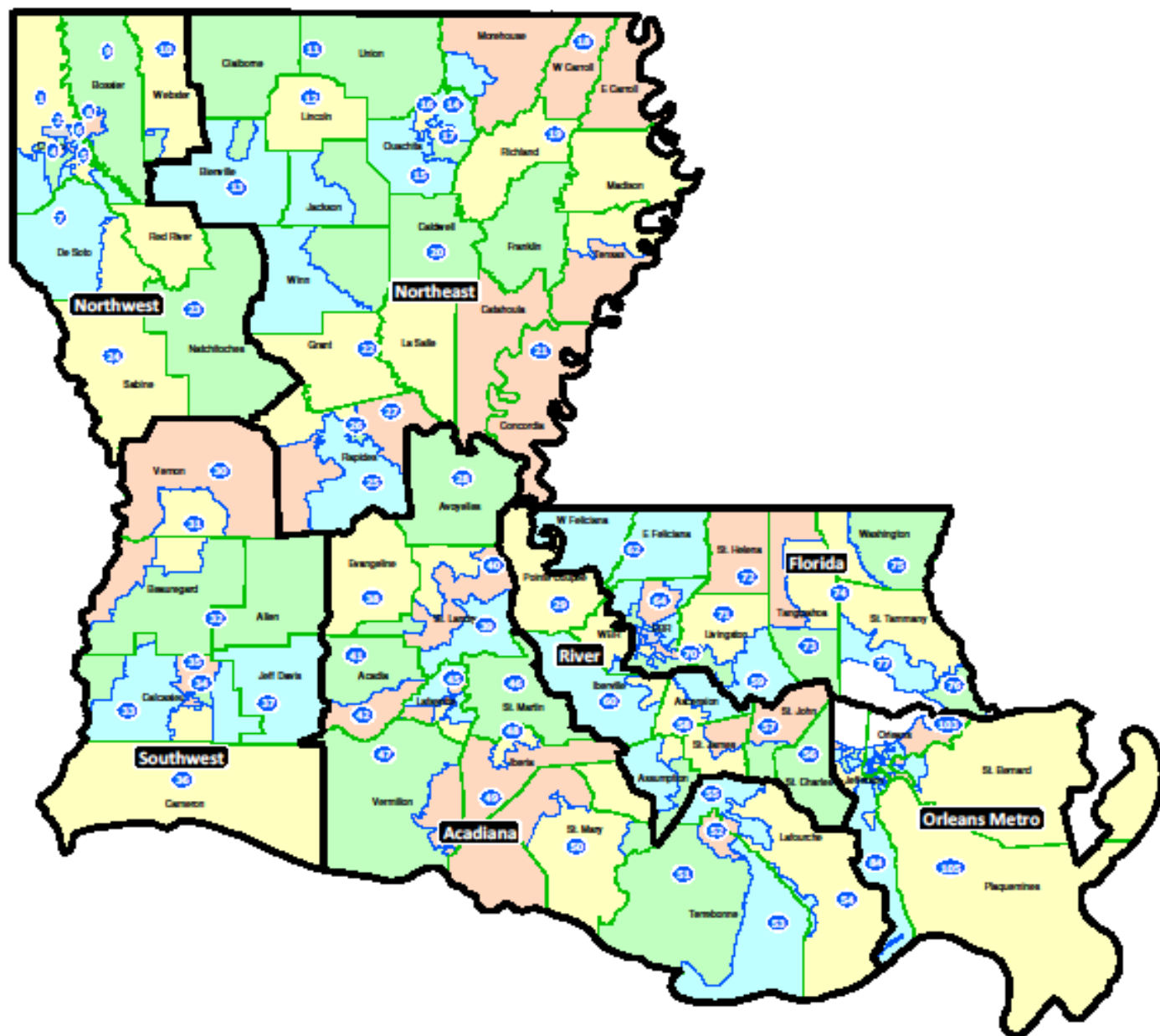


**Legend**

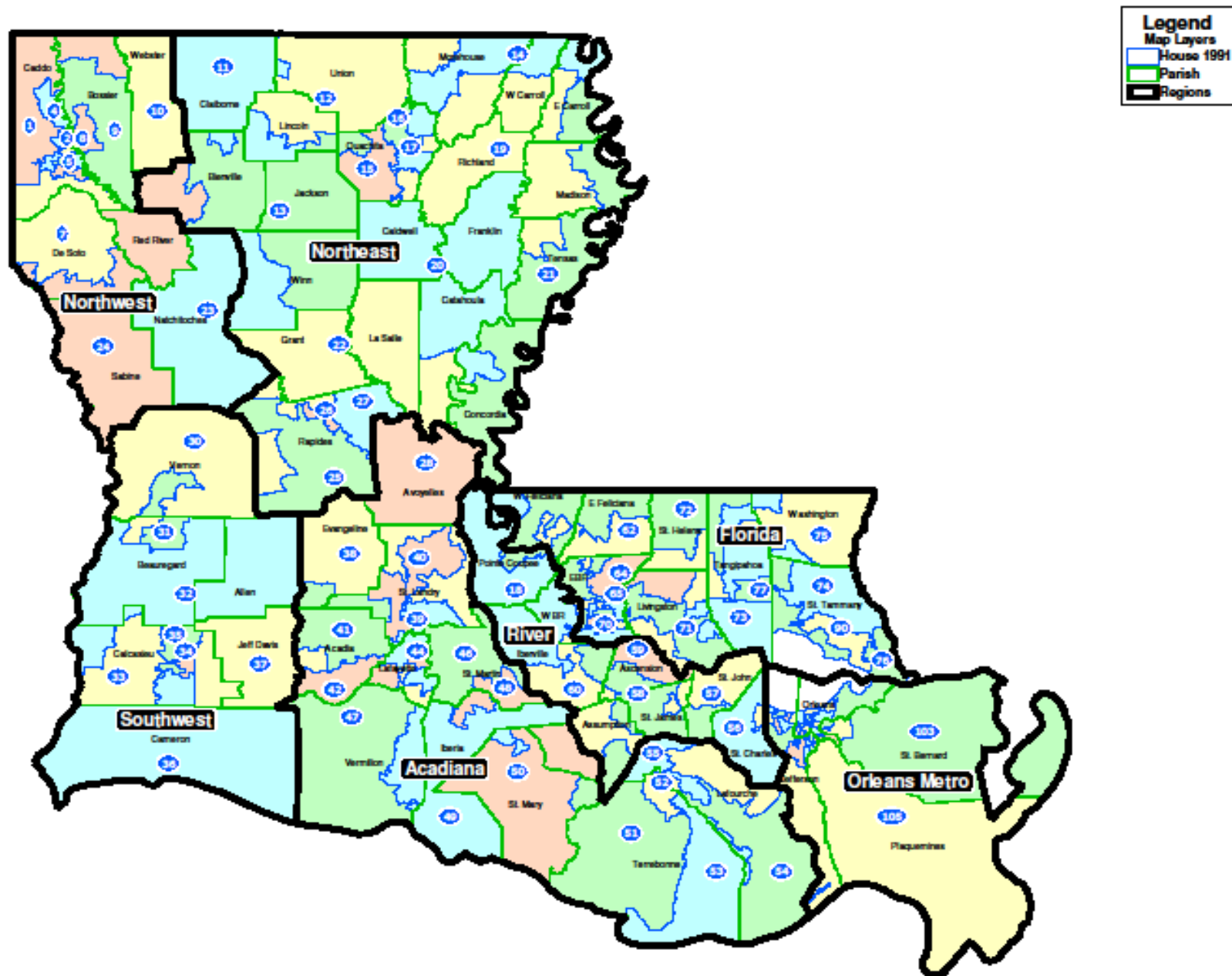
Map Layers

- House 1970
- Parish
- Regions

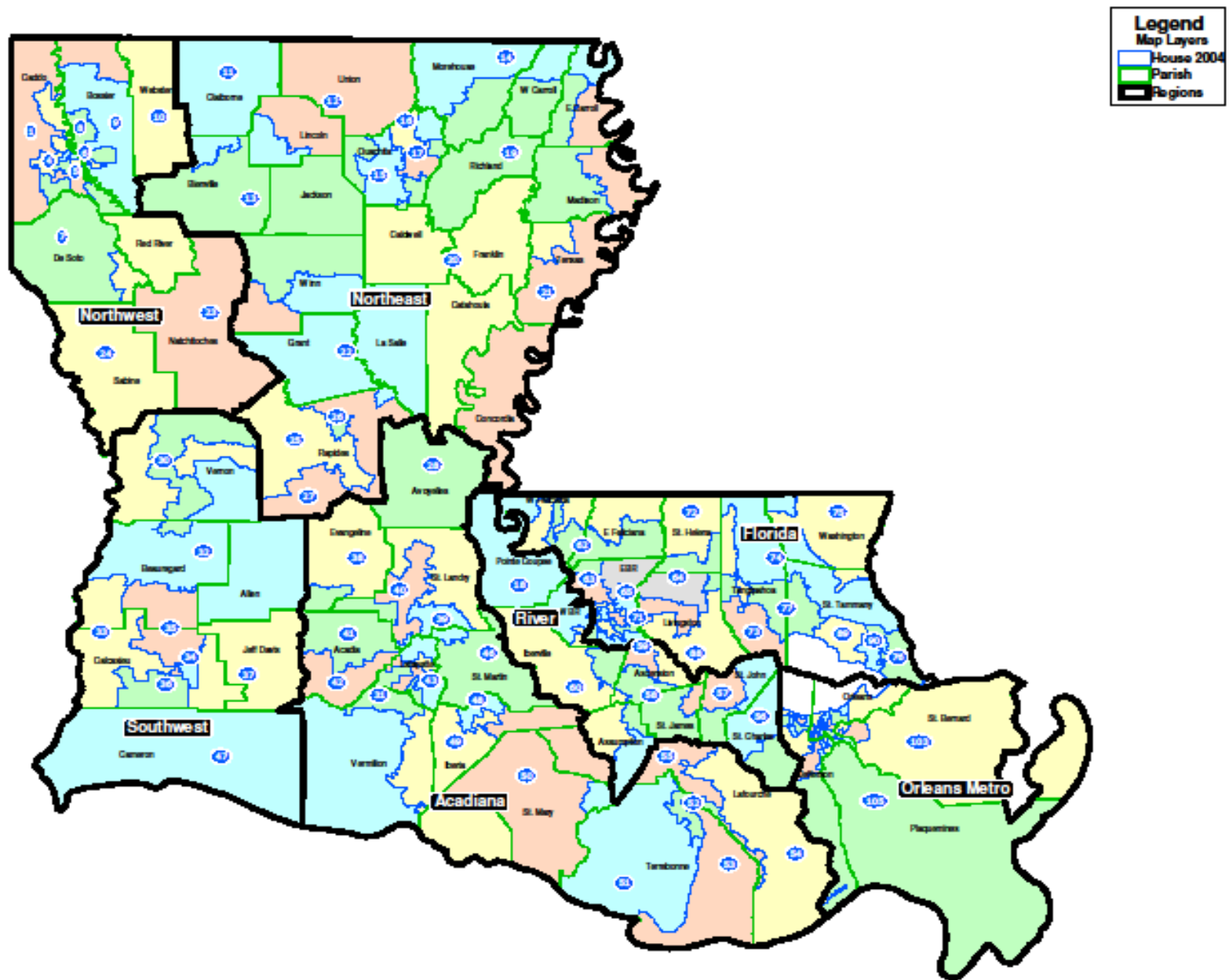
# House 1980



# House 1990

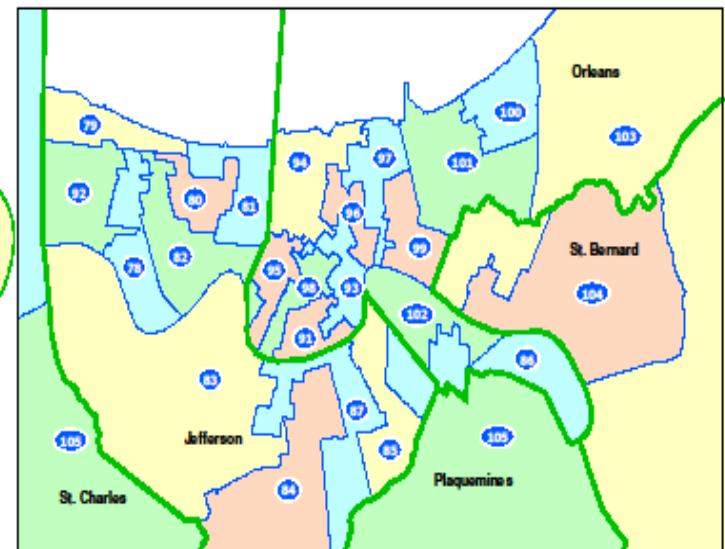
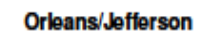
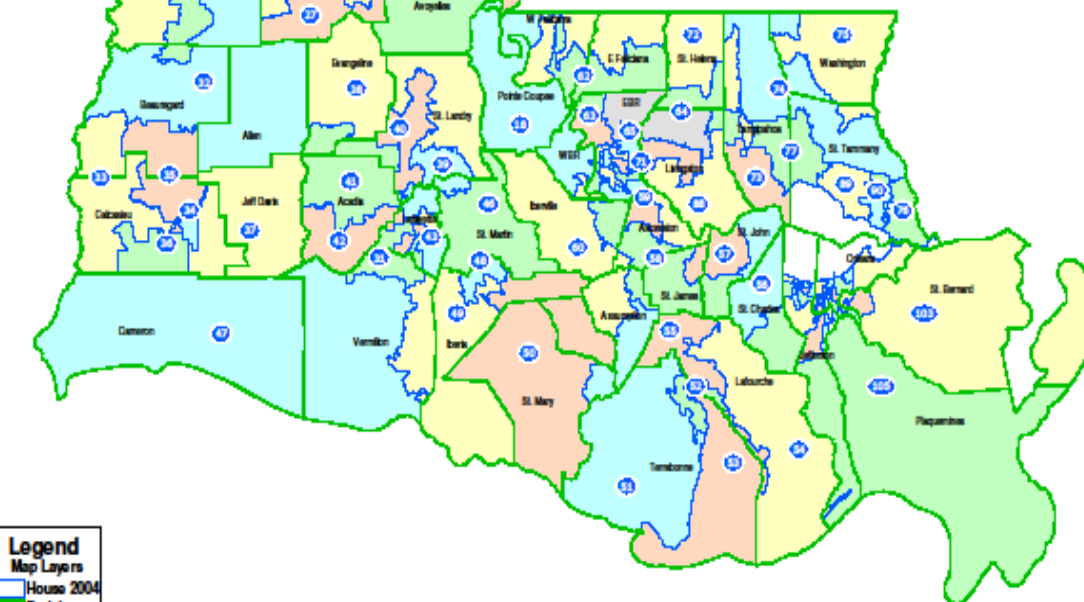
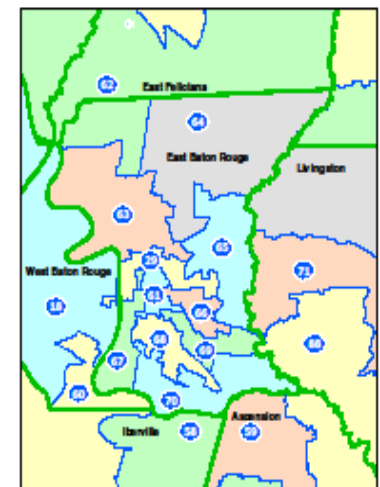
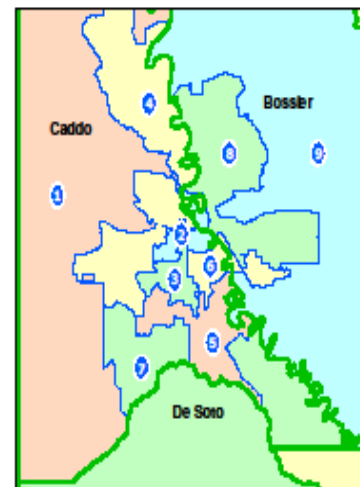
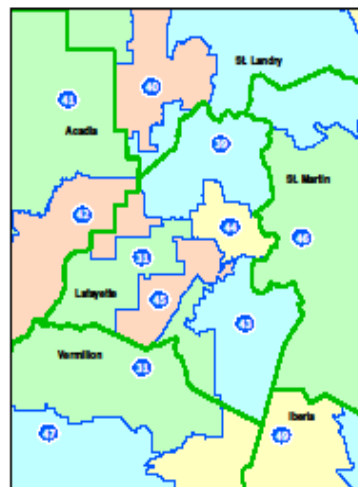
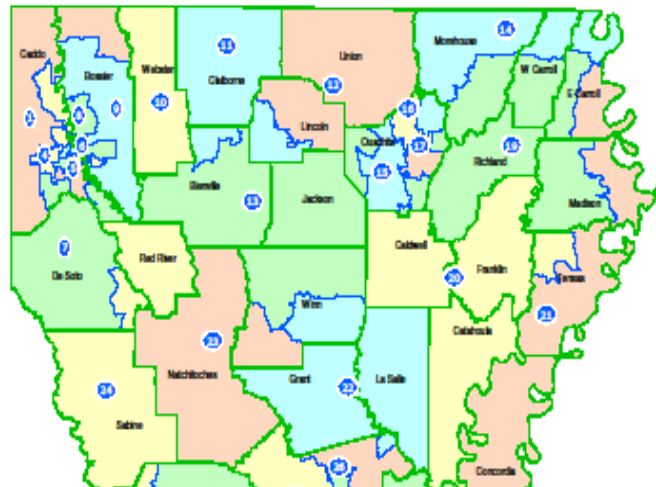


## House 2000



## Lafayette

## Baton Rouge



**Legend**  
Map Layers  
House 2004  
Parish

# **Louisiana Senate**

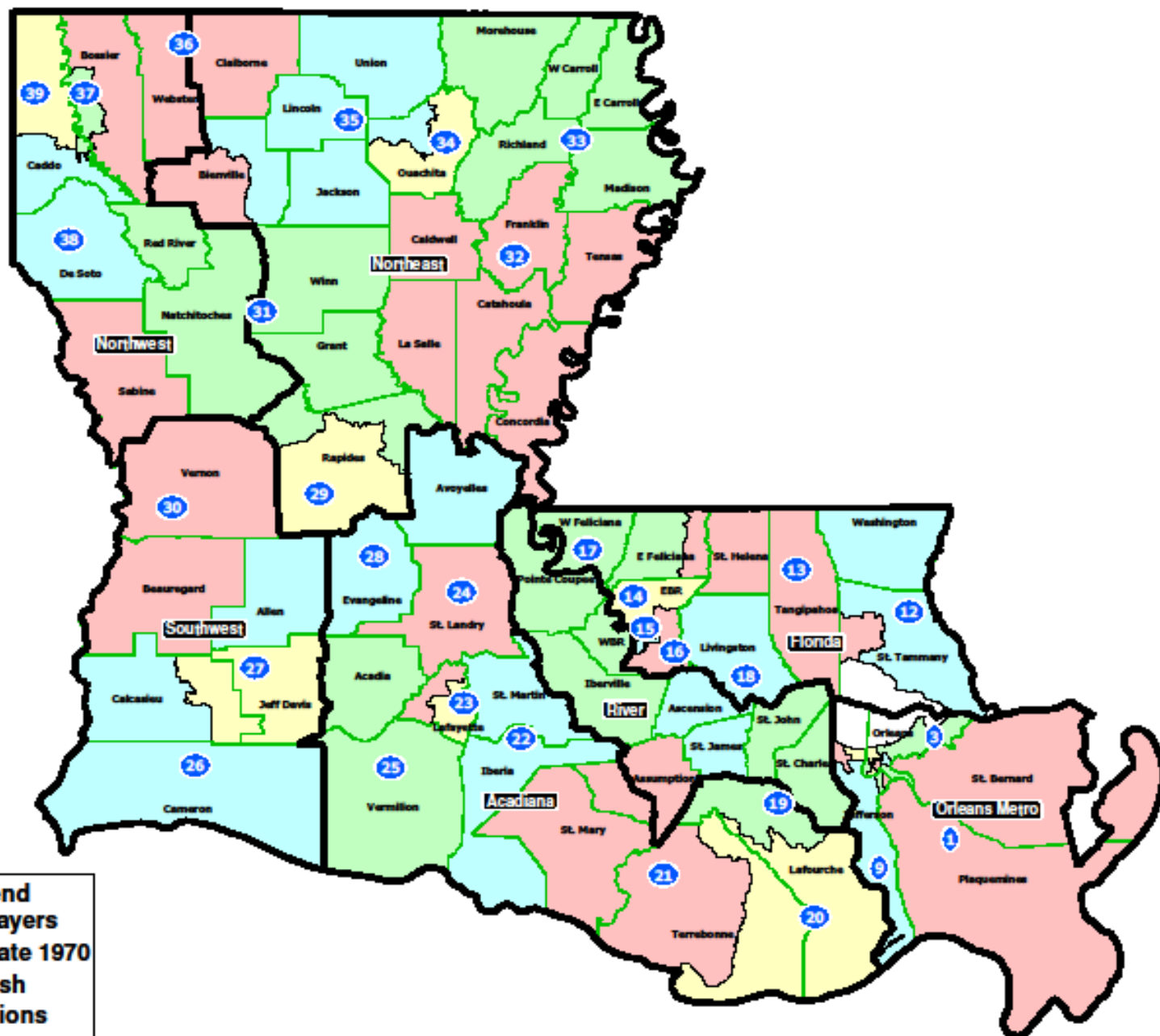
## **District Changes and Regional District Trends 1970 - 2010**



# **Louisiana Senate: Ideal Population by Decade**

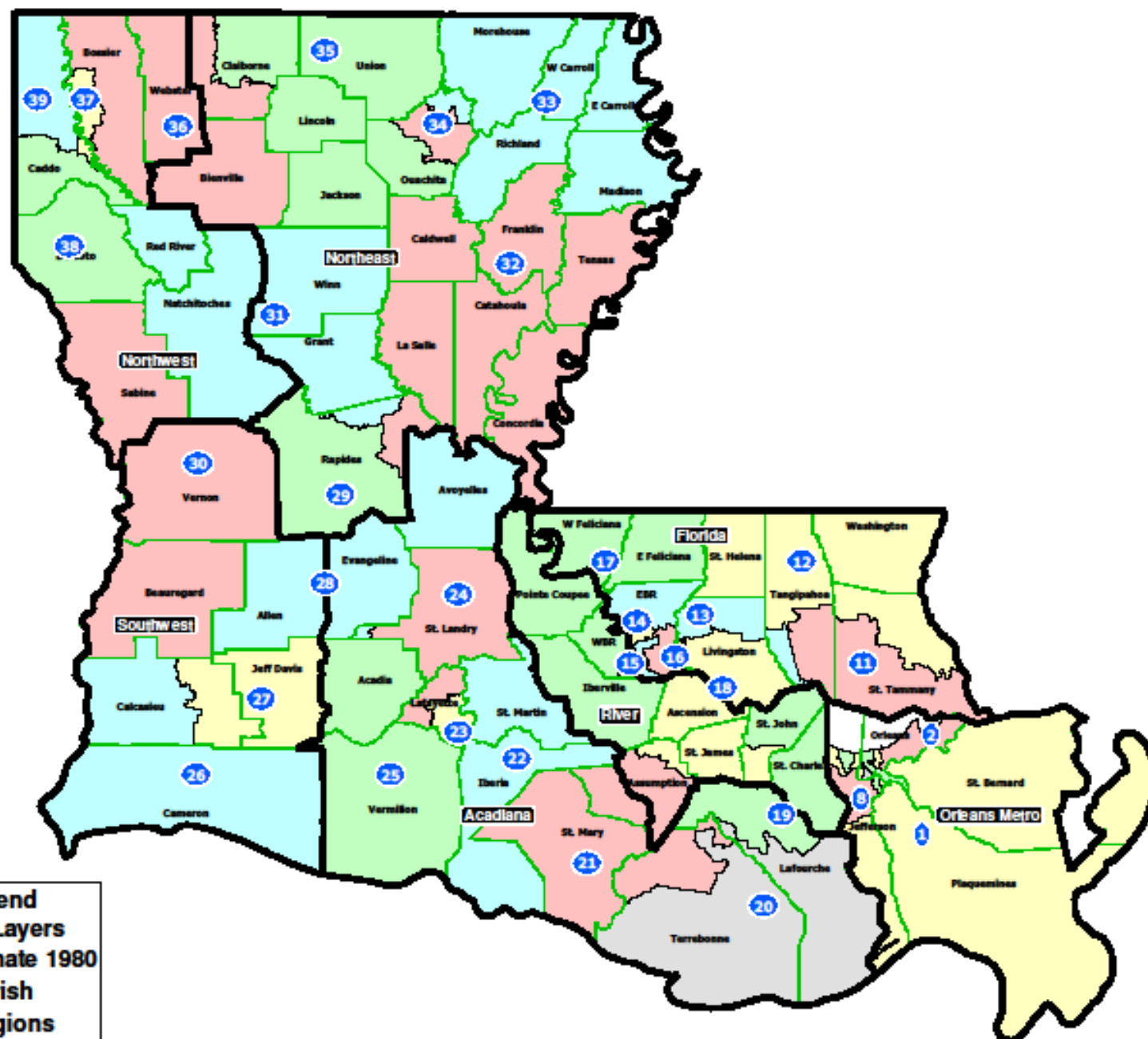
<b>Decade</b>	<b>Ideal Population</b>
<b>1970</b>	<b>93,367</b>
<b>1980</b>	<b>107,844</b>
<b>1990</b>	<b>108,204</b>
<b>2000</b>	<b>114,589</b>
<b>2010</b>	<b>119,812</b>

# Senate 1970 - Regions



**Legend**  
**Map Layers**  
 Senate 1970  
 Parish  
 Regions

### Senate 1980 - Regions

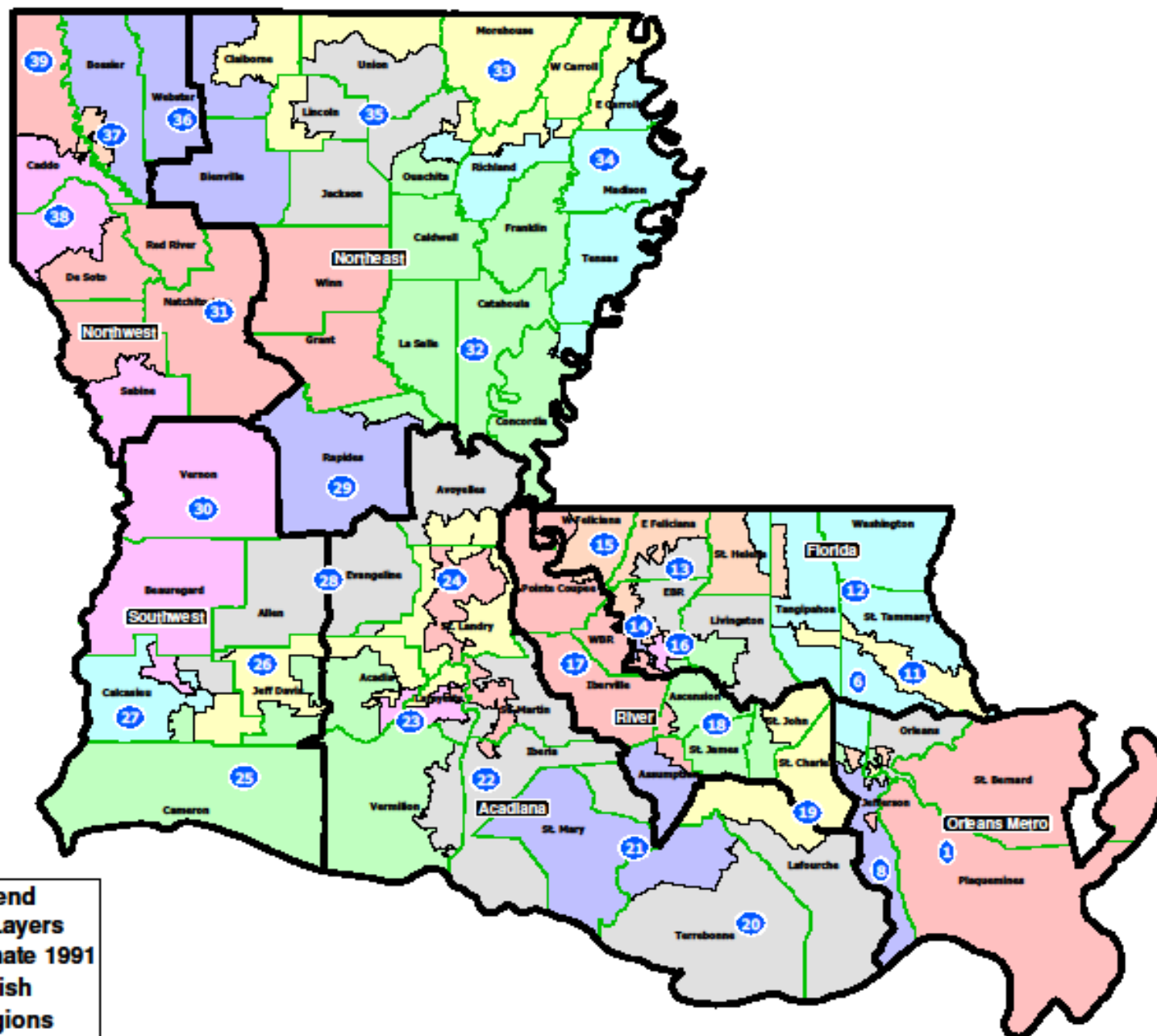


### Legend

### Map Layers

	Senate 1980
	Parish
	Regions

### Senate 1991 - Regions

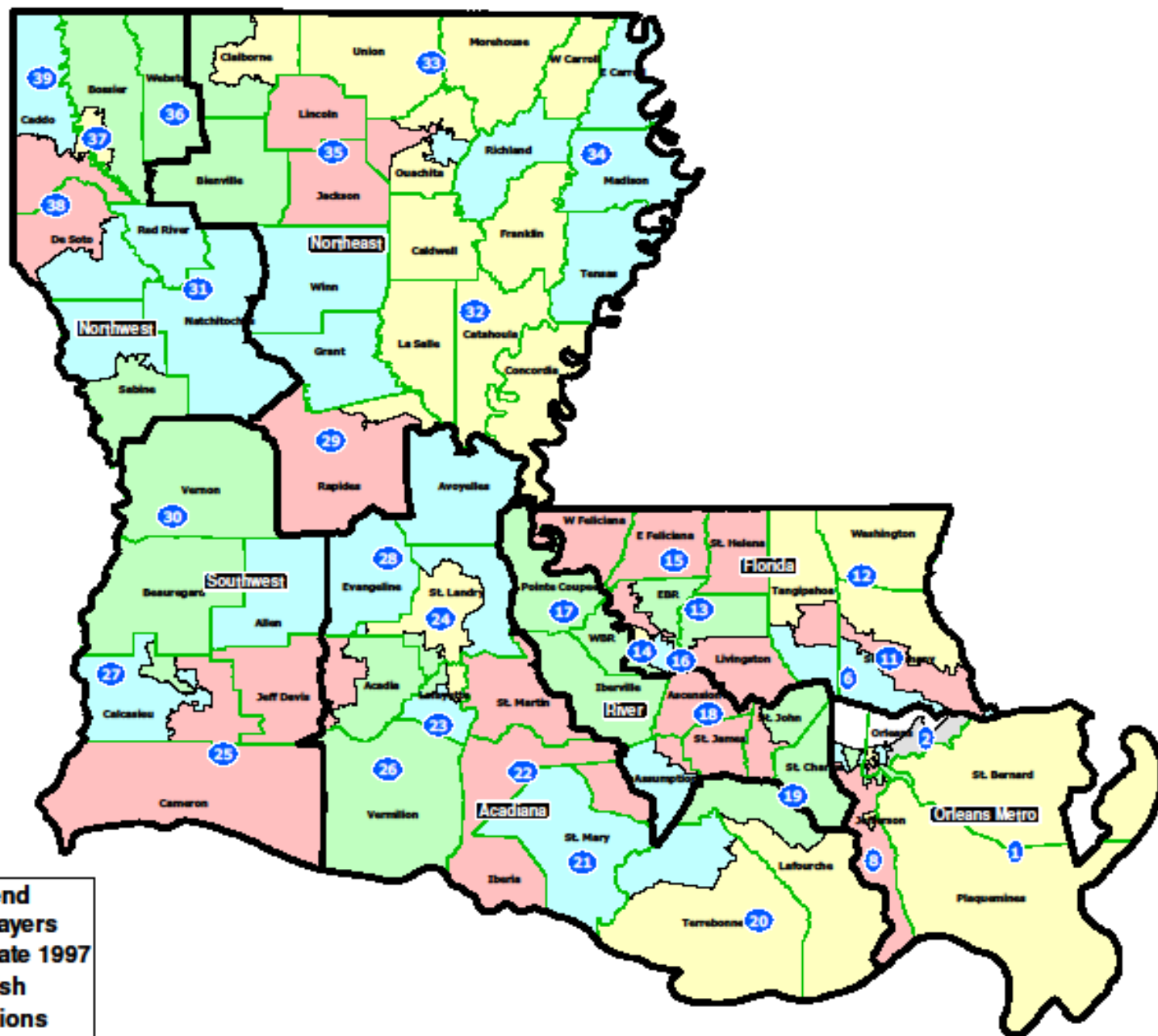


## Legend

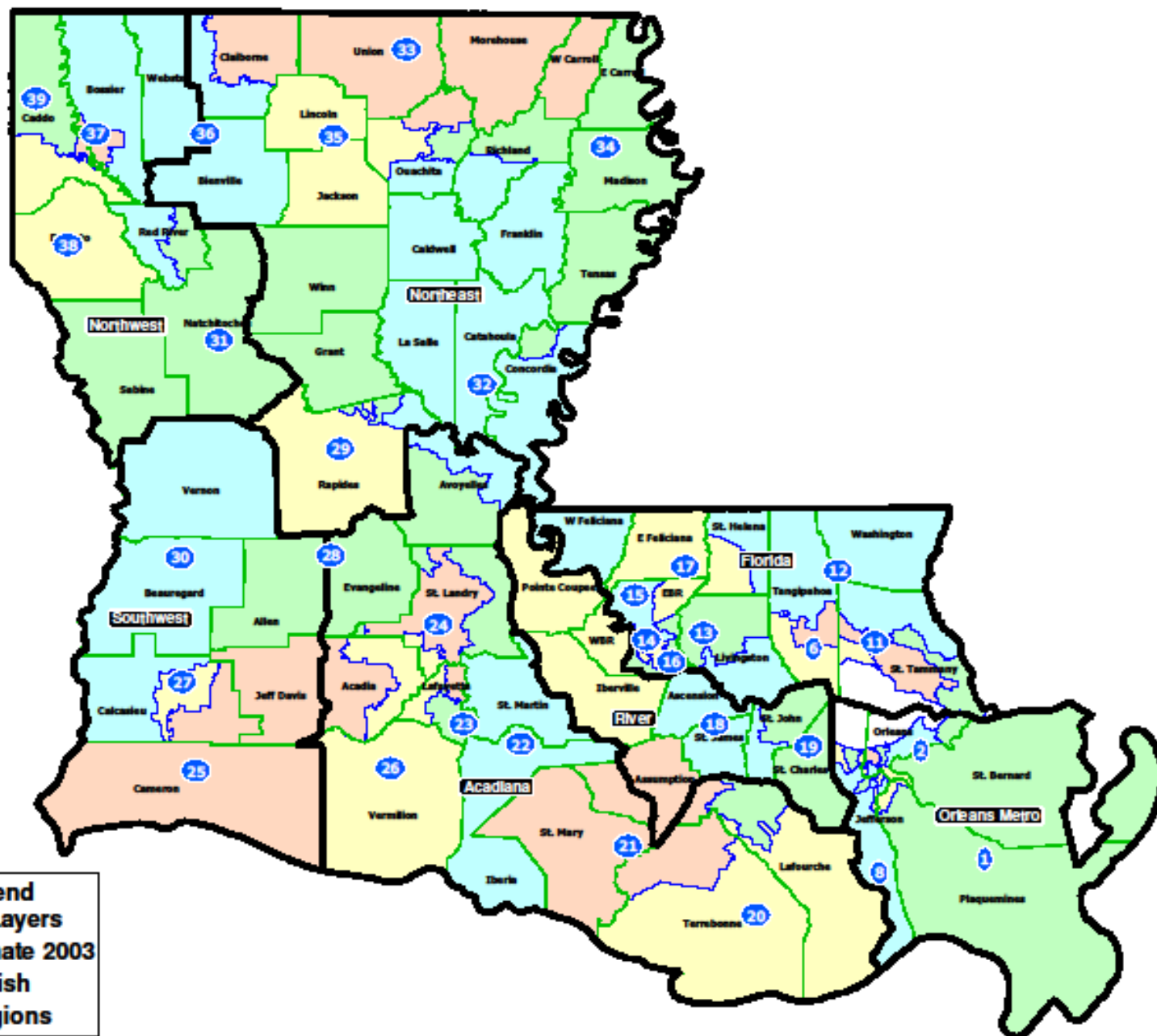
### Map Layers

	Senate 1991
	Parish
	Regions




# Senate 1997 - Regions

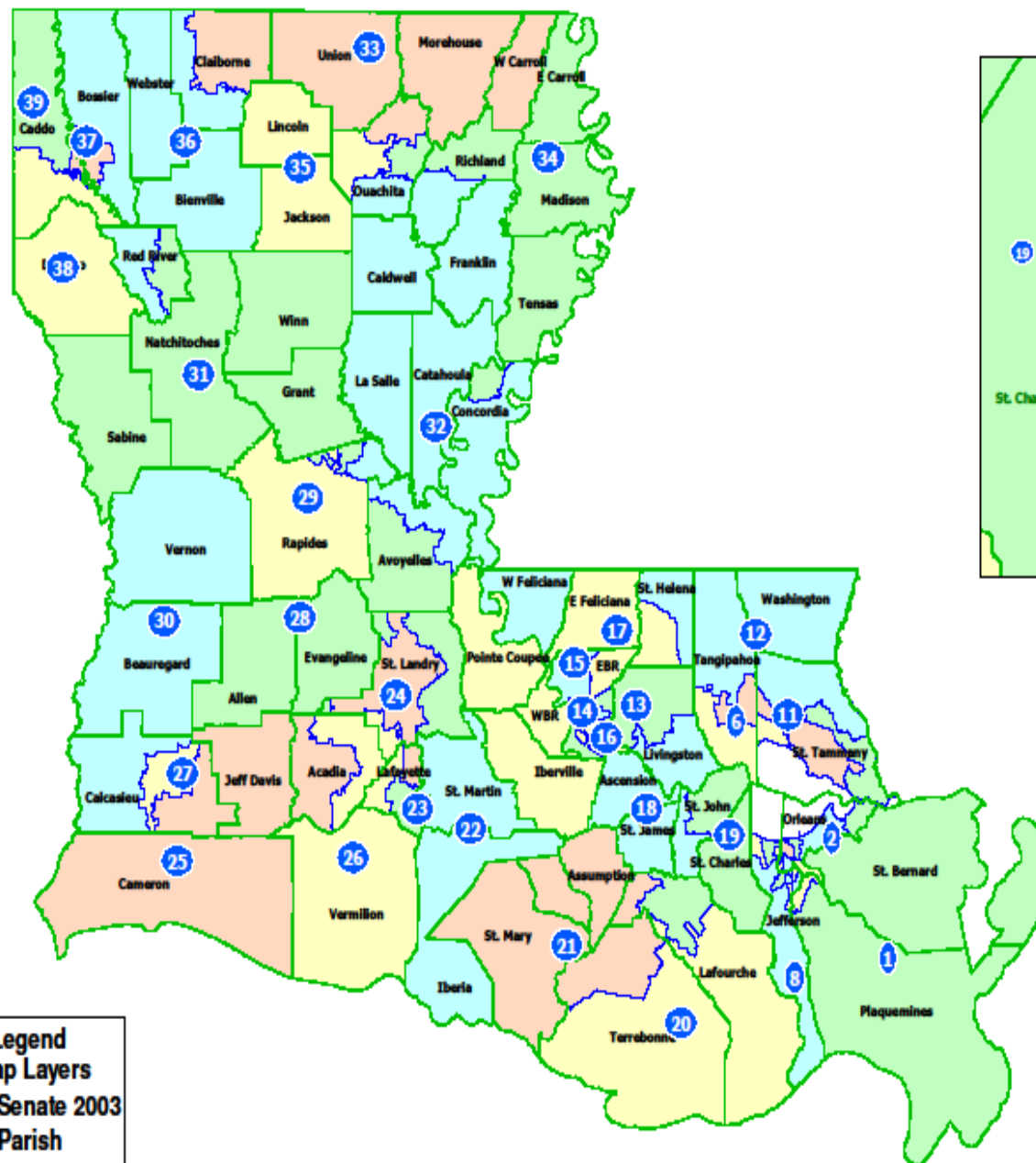


### Senate 2003 - Regions

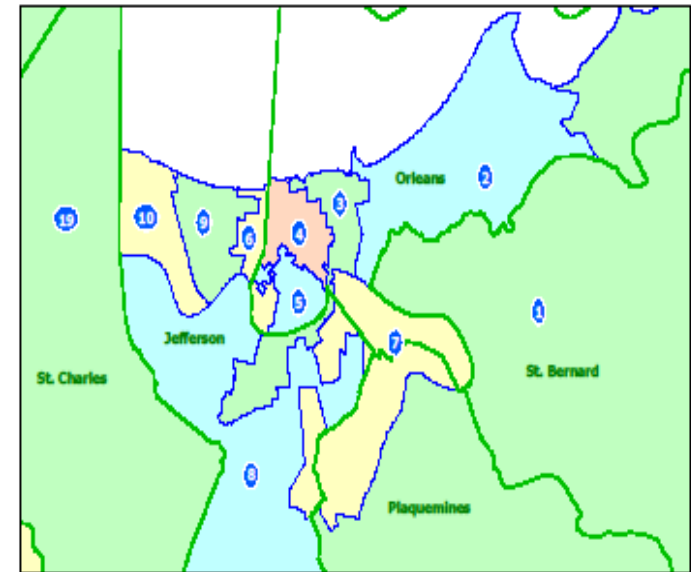


### Legend Map Layers

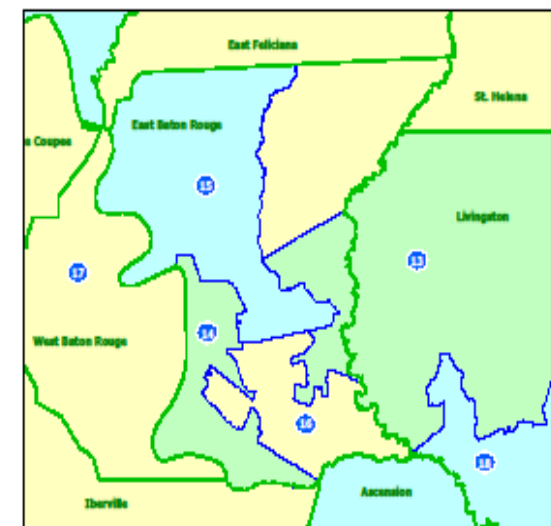
 Senate 2003  
 Parish  
 Regions

**Senate 2003**

### New Orleans - Jefferson



## Baton Rouge



# **Congress**

**District Changes  
and  
Ideal Population  
1980 - 2010**

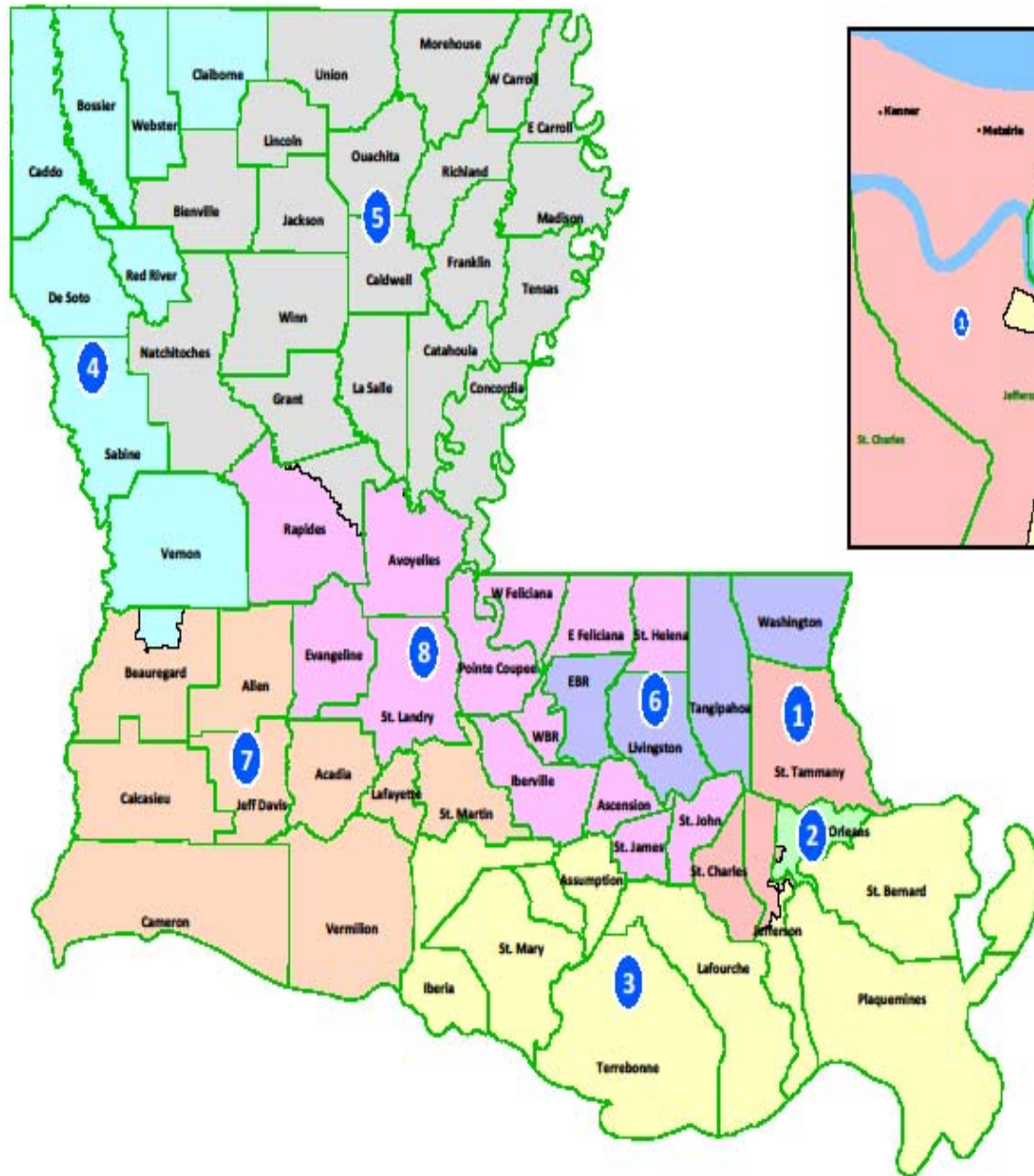


# **Congress:**

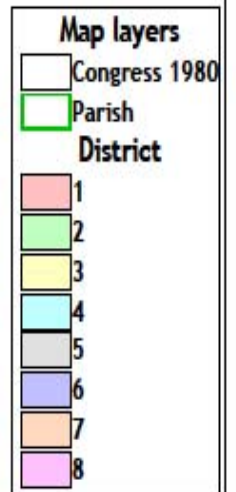
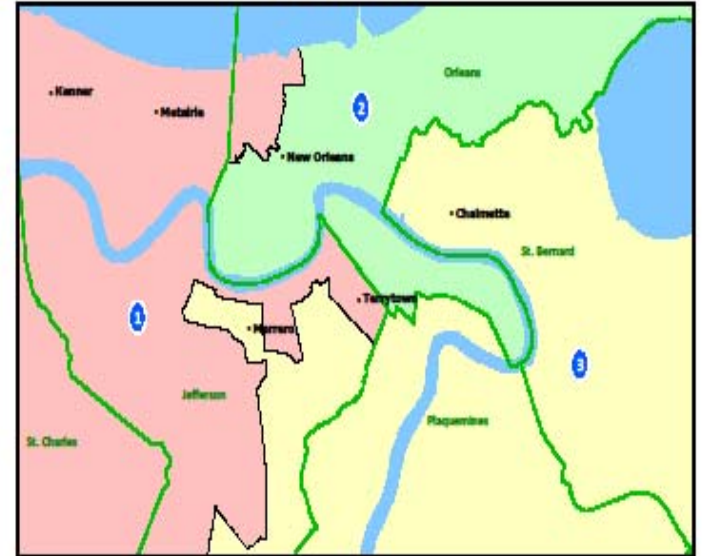
## **Ideal Population by Decade**

<b>Decade</b>	<b>Districts</b>	<b>Ideal Population</b>
<b>1980</b>	<b>8</b>	<b>525,738</b>
<b>1990</b>	<b>7</b>	<b>602,853</b>
<b>2000</b>	<b>7</b>	<b>638,425</b>
<b>2010</b>	<b>7</b>	<b>667,526</b>
<b>2010</b>	<b>6</b>	<b>778,780</b>

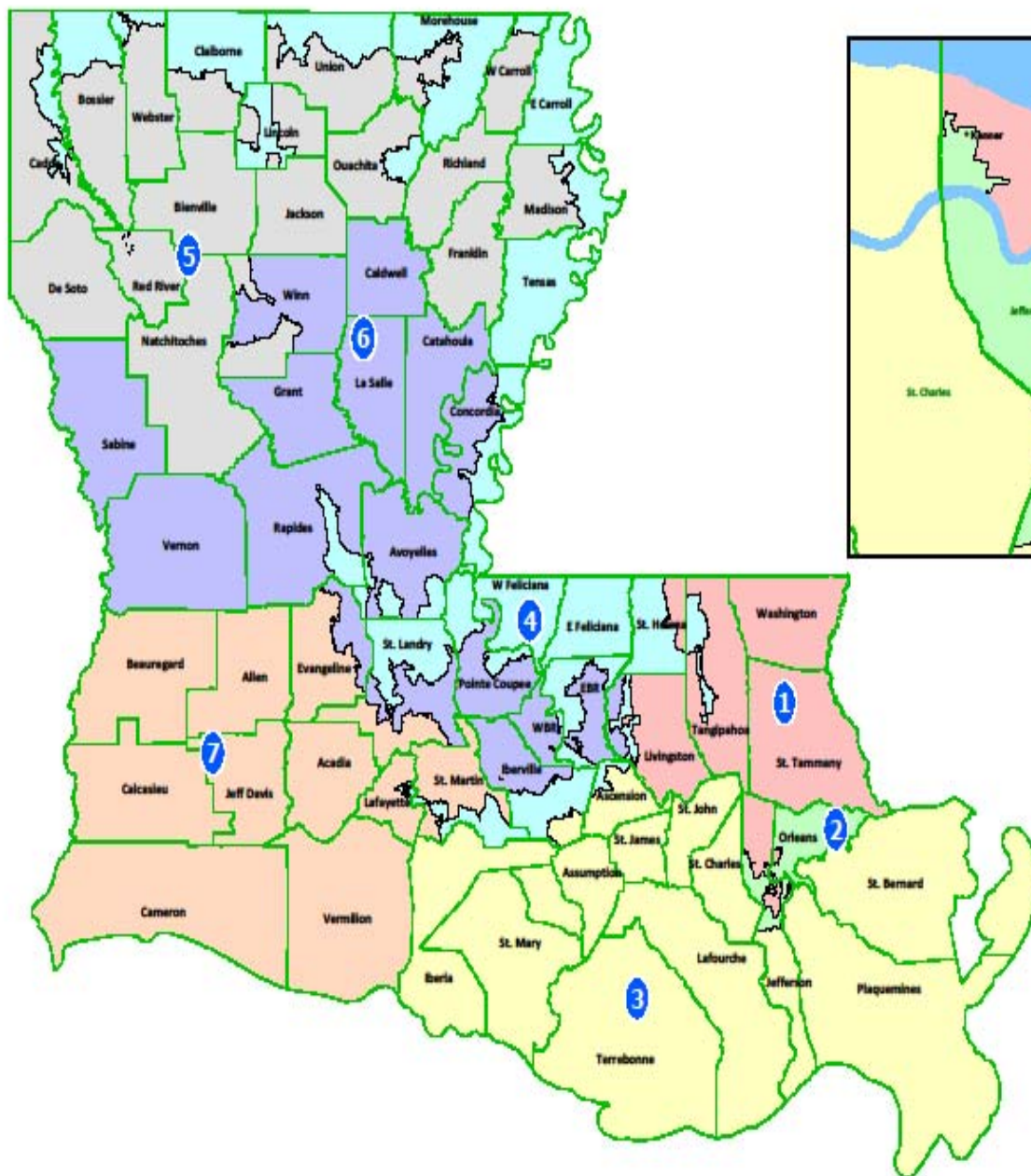
# Congress - 1980



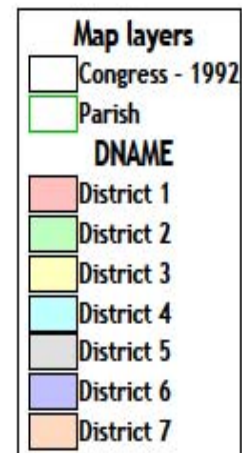
Orleans - Jefferson



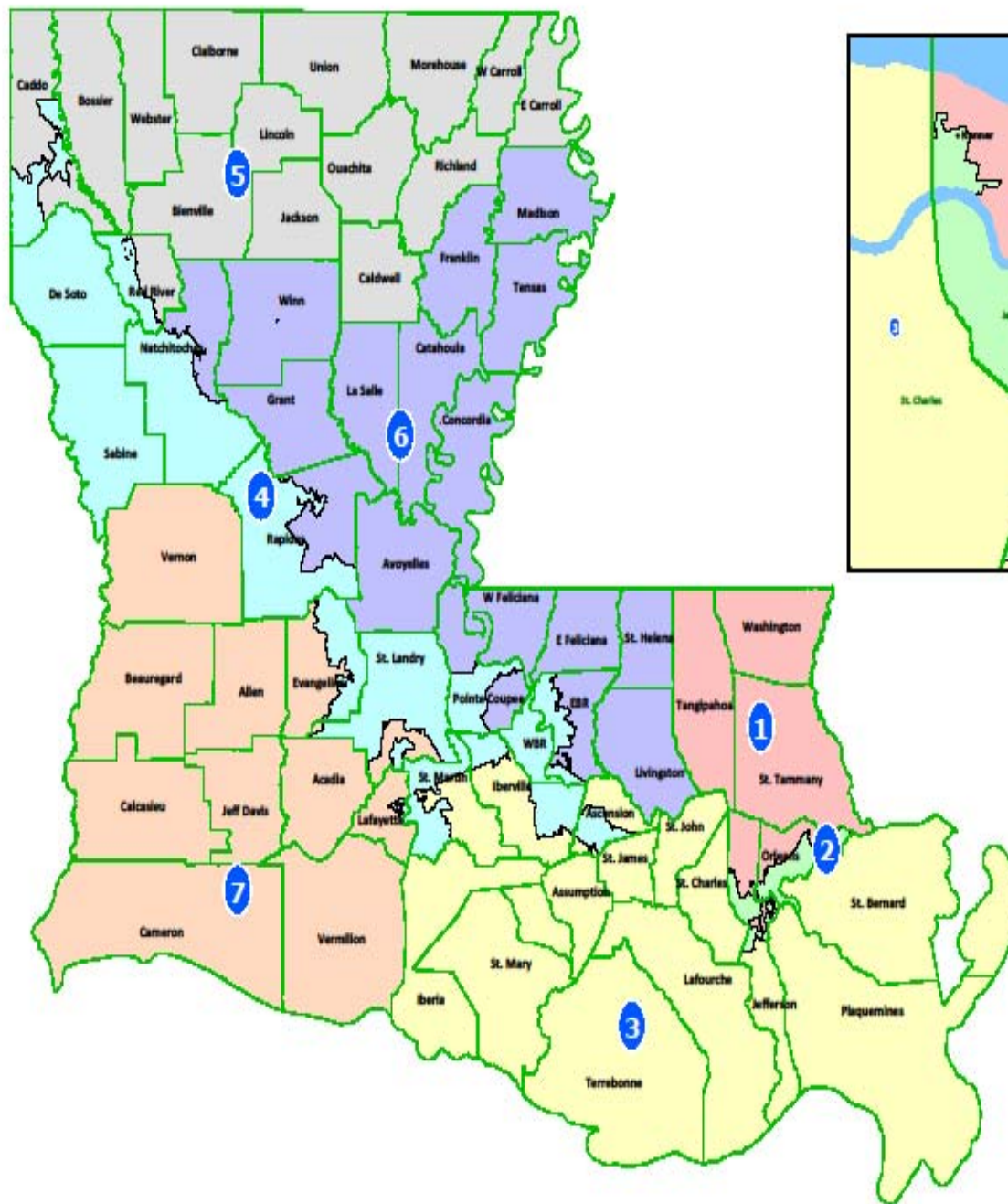
# Congress - 1992



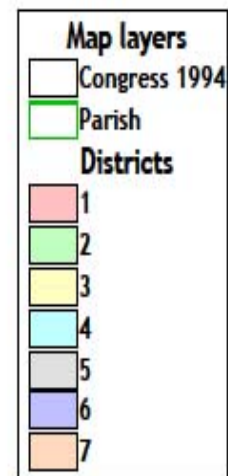
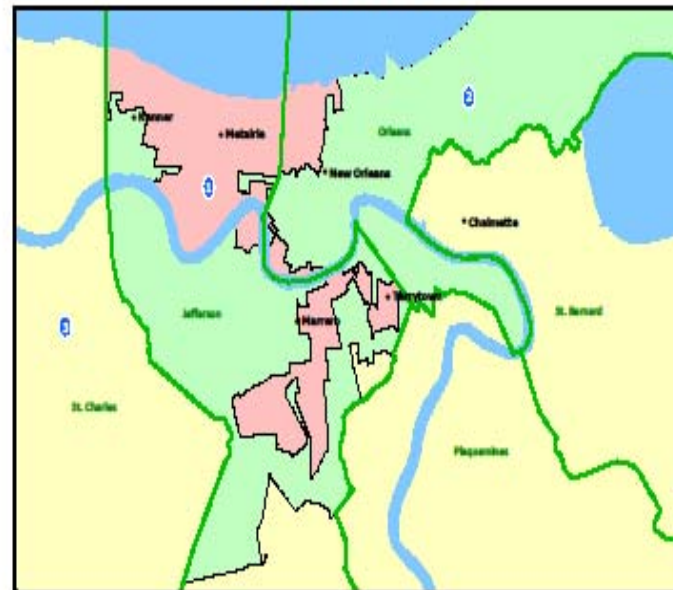
Orleans - Jefferson



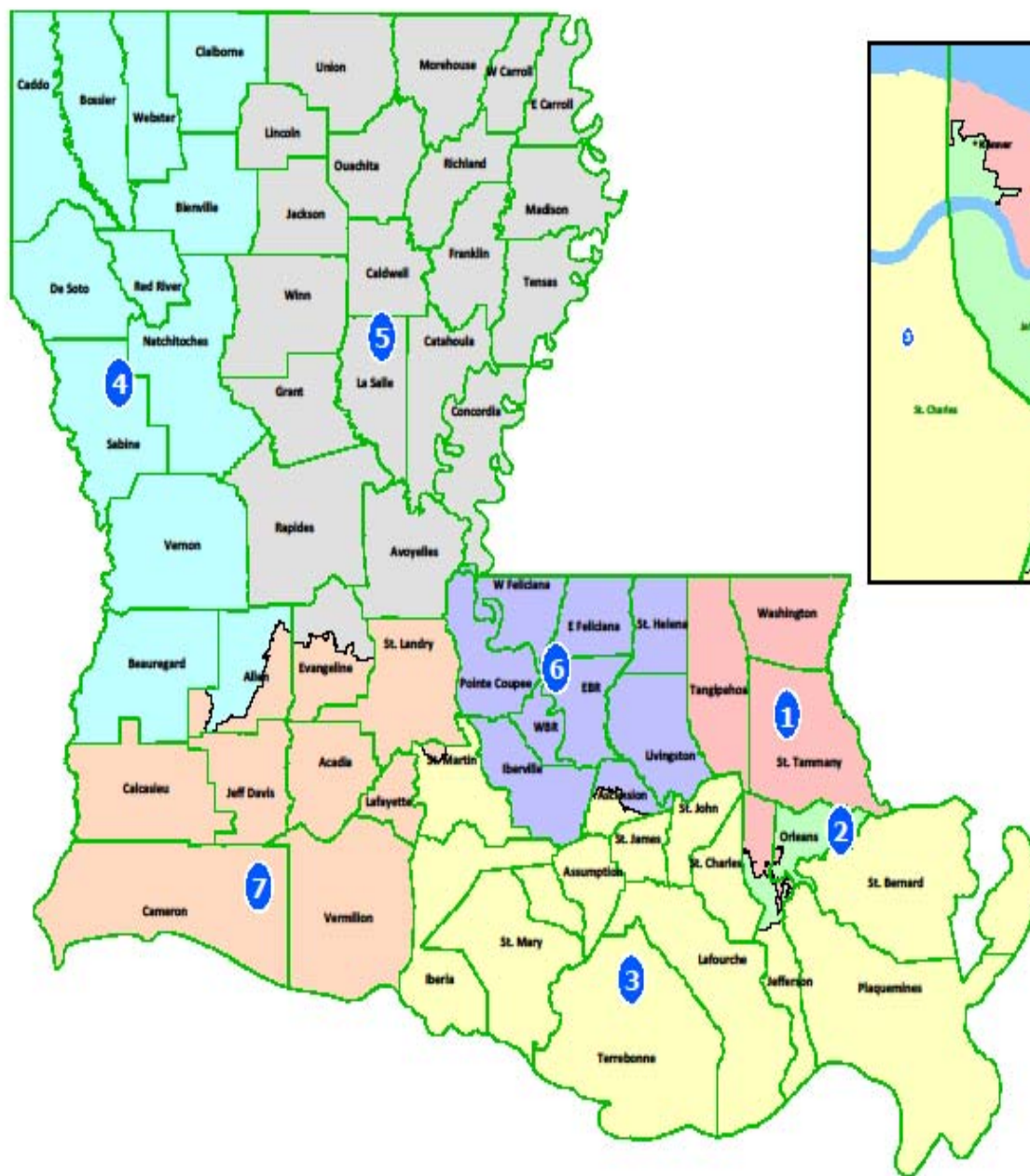




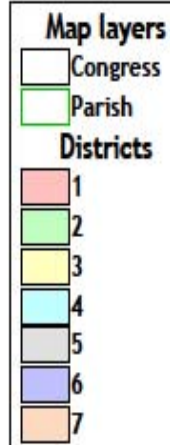
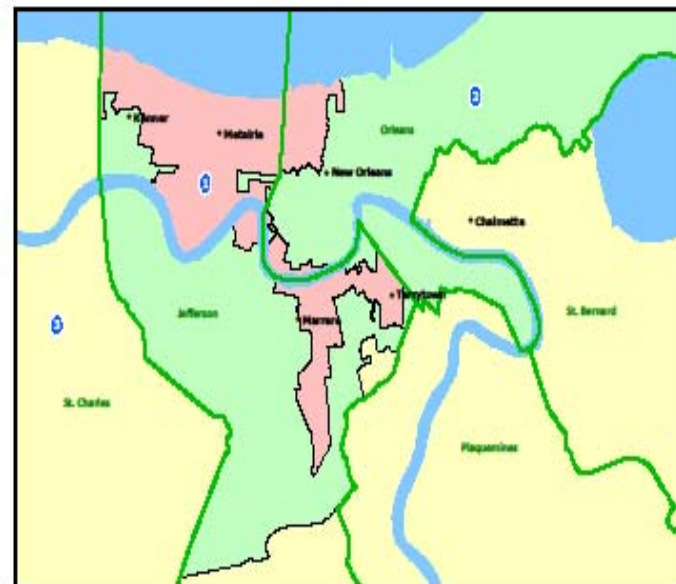
Orleans - Jefferson



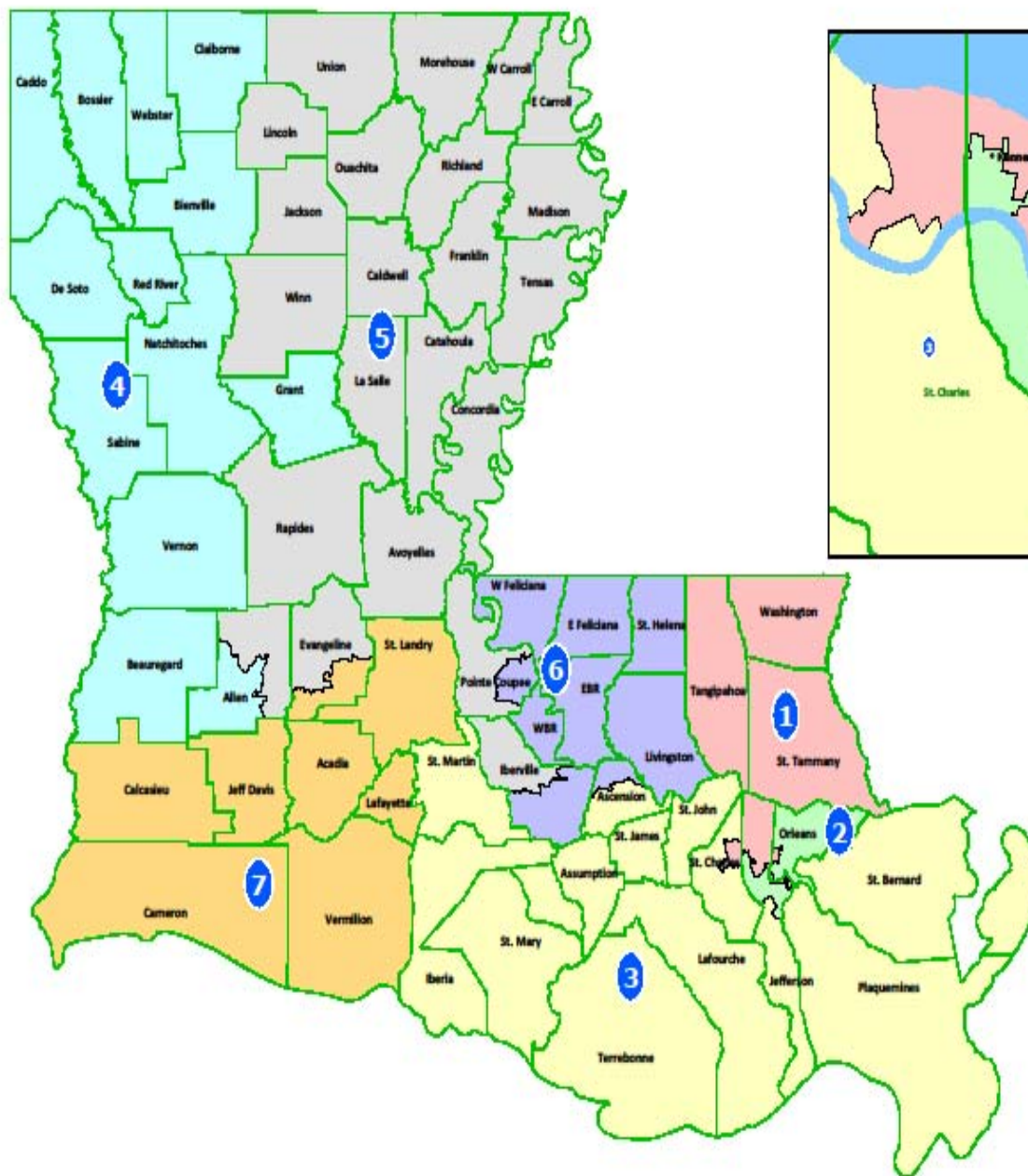
# Congress - 1996



## Orleans - Jefferson







Orleans - Jefferson

