

Representative Jack McFarland
Chairman



Representative Jason Hughes
Vice Chairman

Fiscal Year 2026 Executive Budget Review

AGRICULTURE & FORESTRY

House Committee on Appropriations
House Fiscal Division

March 31, 2025

Budget Analyst: Paige Philyaw

TABLE OF CONTENTS

This presentation was produced by the House Fiscal Division of the Louisiana House of Representatives.

900 N. 3rd Street
Baton Rouge, LA 70802
house.louisiana.gov/housefiscal/

All data and figures were obtained from the governor's Fiscal Year 2025-2026 Executive Budget and Supporting Documents provided by the Office of Planning and Budget within the Division of Administration along with House Bill 1 of the 2025 Regular Session, unless otherwise noted.

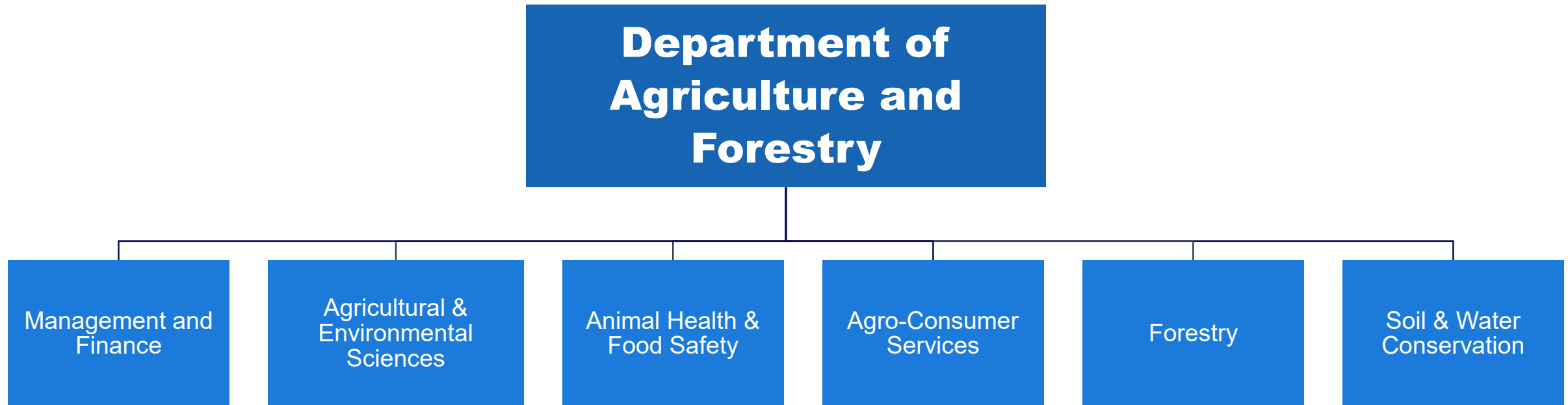
<https://www.doa.la.gov/doa/opb/budget-documents/>

TOPIC

PAGE

Department Organization	3
FY 26 Budget Recommendation	4
Historical Spending	5
Sources of Funding	6
Funding Comparison	7
FY26 Expenditure Recommendation	8
Expenditure Comparison	9
Personnel Information	11
Department Contacts	12
General Department Information	13
General Budgetary Information	20

DEPARTMENT ORGANIZATION

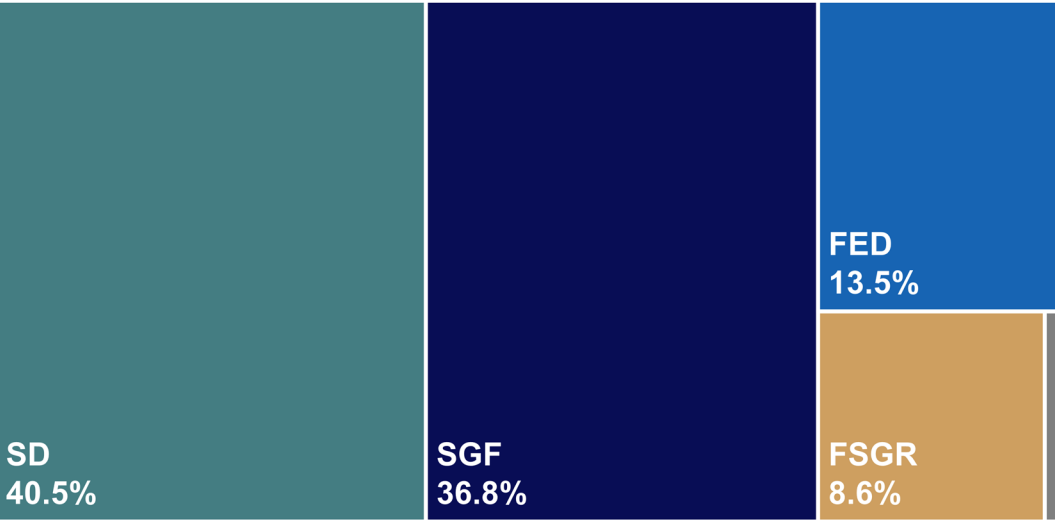


Note: Further detail on department programs, functions, and services are under the General Department Information section.

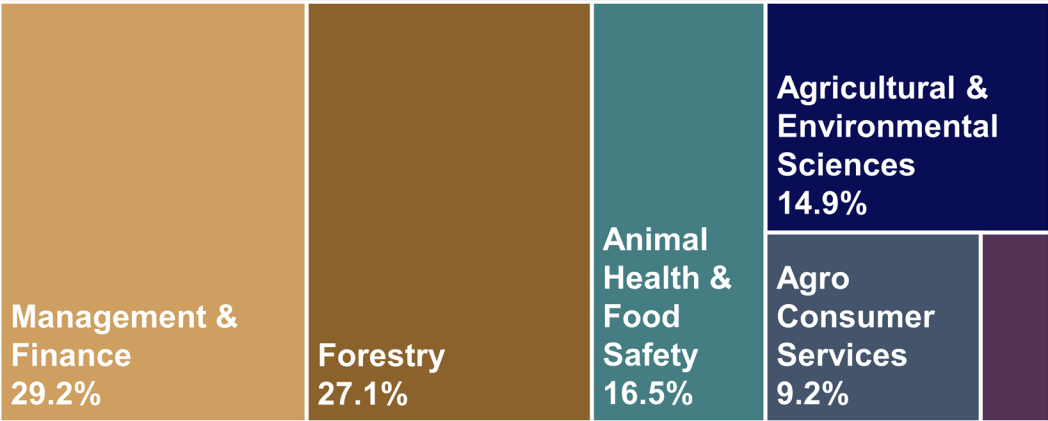
FY 26 BUDGET RECOMMENDATION

Total Funding = \$95,927,087

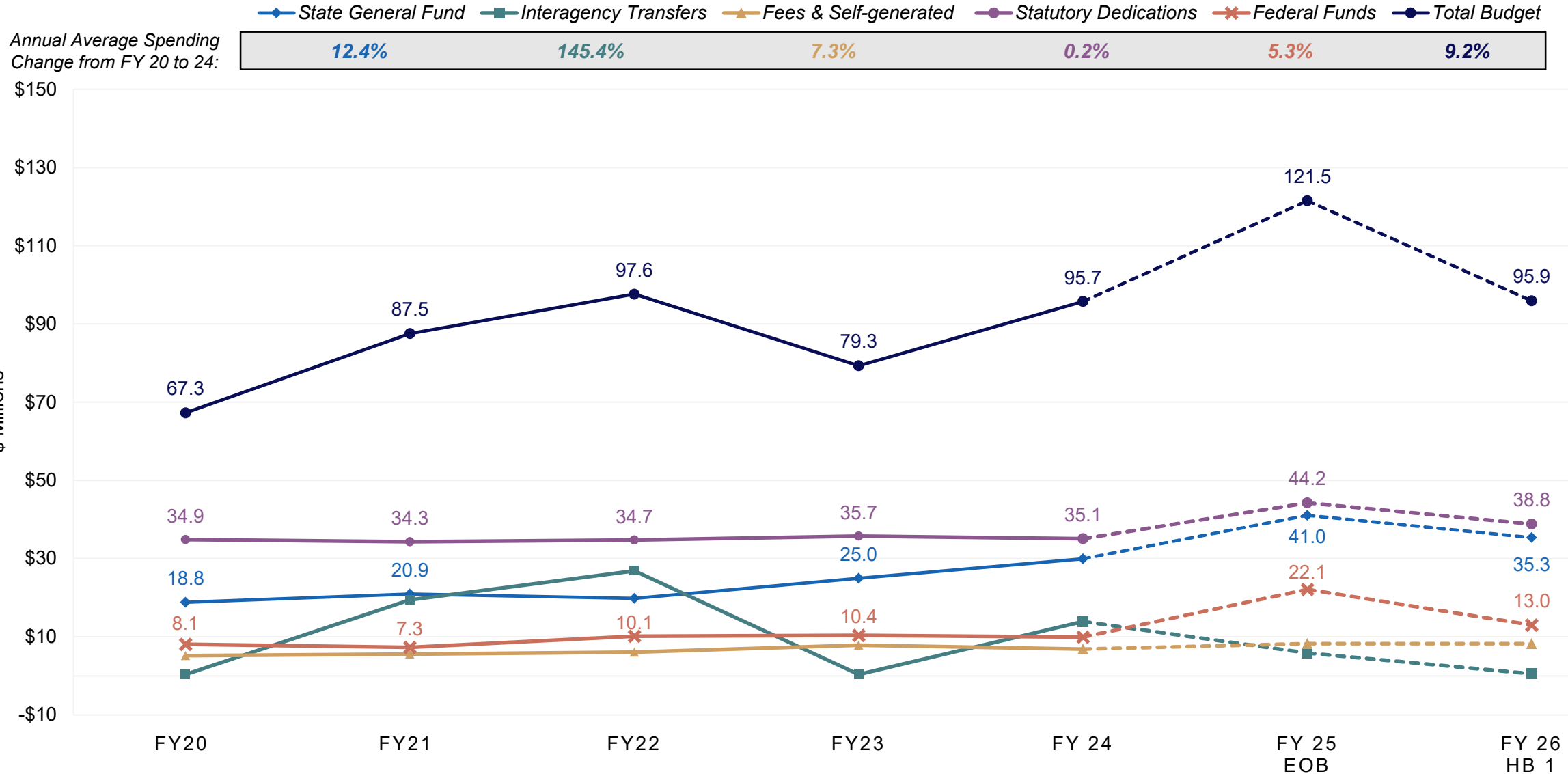
Means of Finance		
State General Fund	\$	35,343,397
Interagency Transfers		539,035
Fees & Self-generated		8,252,743
Statutory Dedications		38,803,433
Federal Funds		12,988,479
Total	\$	95,927,087



Program Funding & Authorized Positions		
	Amount	Positions
Management & Finance	\$ 28,053,287	111
Agricultural & Environmental Sciences	14,250,629	106
Animal Health & Food Safety	15,849,789	104
Agro Consumer Services	8,870,345	74
Forestry	26,025,536	181
Soil and Water Conservation	2,877,501	10
Total	\$ 95,927,087	586



HISTORICAL SPENDING



SOURCES OF FUNDING

State General Fund \$35.3 M	Interagency Transfers \$539,035	Self-generated Revenue \$8.3 M	Statutory Dedications \$38.8 M	Federal Funds \$12.9 M
The chief operating fund of the State recognized by the Revenue Estimating Conference from various taxes, licenses, fees, and other revenue sources except for those identified as other means of financing	<p>Funding is derived from the following transfers:</p> <ul style="list-style-type: none"> \$300,000 from the Coastal Protection & Restoration Authority – for developing erosion control plans along the coast, best management practices, and water quality & wetland resource programs \$189,035 from the Louisiana Department of Health & Hospitals for storage of the state's antiviral cache of medications \$50,000 from the Department of Environmental Quality for the Lake St. Joseph Nutrient Loading reduction 	<p>Revenues derived from the following sources:</p> <ul style="list-style-type: none"> \$1.4 M from the Poultry & Egg Program \$1.3 M from miscellaneous receipts such as refunds or insurance reimbursements \$1.2 M from the Agricultural Chemistry Program \$1.2 M from the Food Distribution Program \$601,688 from the Board of Animal Health for health certifications \$601,301 from the Fruit & Vegetable Inspection Program 	<p>Funding is derived from the following funds:</p> <ul style="list-style-type: none"> \$11.8 M from the Louisiana Agricultural Finance Authority Fund \$6.3 M from the Pesticide Fund \$4.8 M from the Petroleum Products Fund \$3.2 M from the Weights & Measures Fund \$2.8 M from the Feed & Fertilizer Fund \$2.6 M from the Horticulture & Quarantine Fund 	<p>Federal funding derived from the following grants:</p> <ul style="list-style-type: none"> \$8.5 M from the U.S. Department of Agriculture \$2.3 M from the U.S. Environmental Protection Agency \$1.2 M from the U.S. Food and Drug Administration \$638,360 from the U.S. Federal Emergency Management Agency \$81,862 from the U.S. Department of Commerce

Note: Further details on Statutory Dedication funding are under the General Budgetary Information section.

FUNDING COMPARISON

Means of Finance	FY 24 Actual Expenditures	FY 25 Existing Operating Budget 12/1/24	FY 26 HB1 Budget	Change Existing Operating Budget to HB1		Change Actual Expenditures to HB1	
SGF	\$ 29,951,345	\$ 41,036,778	\$ 35,343,397	\$ (5,693,381)	(13.9%)	\$ 5,392,052	18.0%
IAT	13,904,563	5,837,147	539,035	(5,298,112)	(90.8%)	(13,365,528)	(96.1%)
FSGR	6,848,956	8,253,309	8,252,743	(566)	(0.0%)	1,403,787	20.5%
Stat Ded	35,073,108	44,232,304	38,803,433	(5,428,871)	(12.3%)	3,730,325	10.6%
Federal	9,927,614	22,126,709	12,988,479	(9,138,230)	(41.3%)	3,060,865	30.8%
Total	\$ 95,705,586	\$ 121,486,247	\$ 95,927,087	\$ (25,559,160)	(21.0%)	\$ 221,501	0.2%

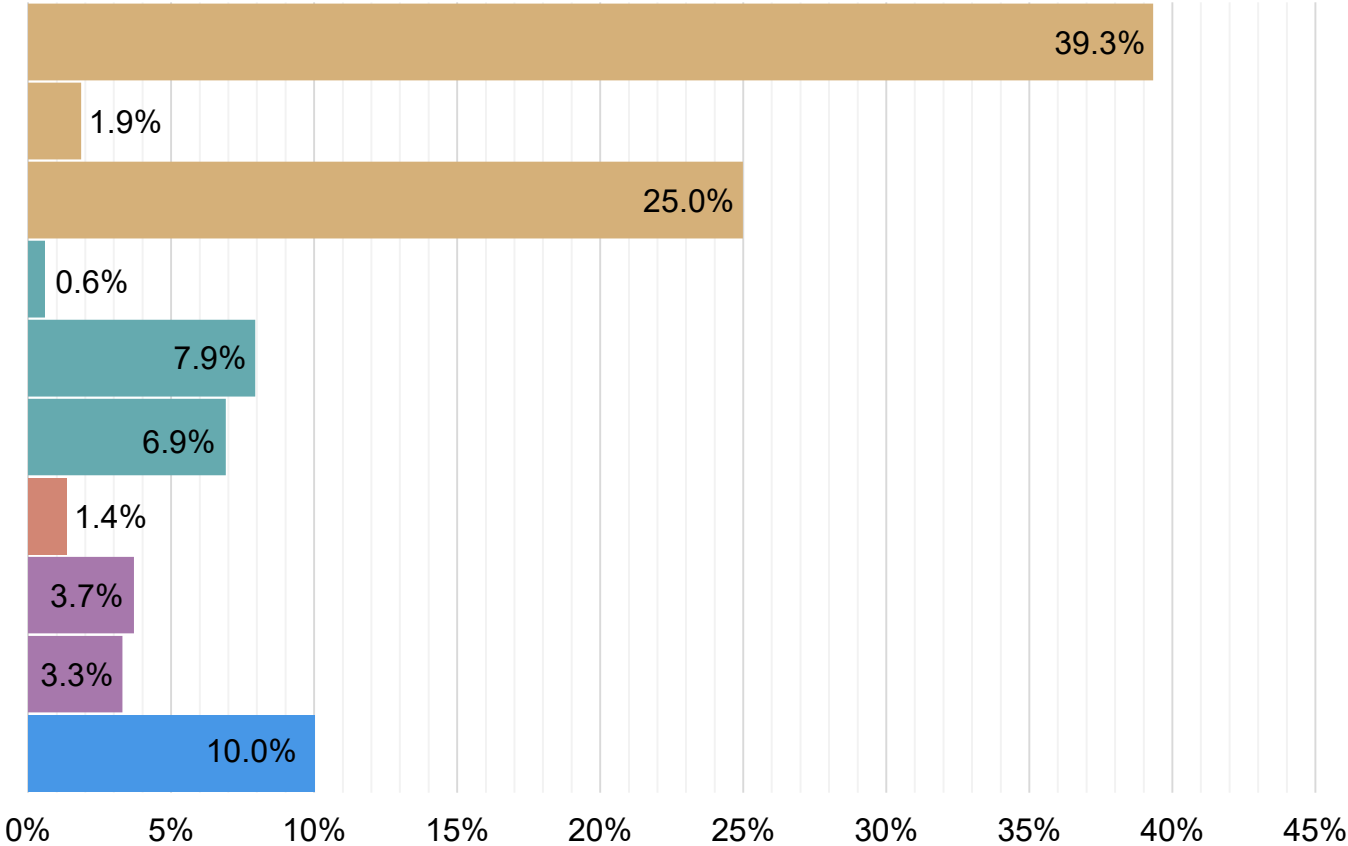
Significant funding changes compared to the FY 25 Existing Operating Budget

State General Fund	Interagency Transfers	Statutory Dedications	Federal Funds
<p>(\$5.7 M) decrease primarily due to:</p> <ul style="list-style-type: none"> The removal of funding carried into FY 25 that is no longer needed in FY 26: <ul style="list-style-type: none"> (\$15 M) in the Office of Forestry (\$1.1 M) in the Office of the Management and Finance \$9,1 M increase for statewide acquisition adjustments 	<p>(\$5.3 M) decrease due to:</p> <p>The removal of funding carried into FY 25 that is no longer needed in FY 26:</p> <ul style="list-style-type: none"> (\$4.5 M) in the Office of Forestry to reimburse other agencies with FEMA eligible expenses (\$782,184) in the Office of Animal Health and Food Safety 	<p>(\$5.4 M) net decrease due to:</p> <ul style="list-style-type: none"> (\$5.5 M) in Standard statewide adjustments \$135,378 increase in the Weights & Measures Program from the Weights & Measures Fund (\$25,000) anticipated revenue reduction from the Livestock Brand Commission Fund 	<p>(\$9.1 M) net decrease due to:</p> <ul style="list-style-type: none"> (\$9.9 M) decrease from federal funds carried into FY 25 that are no longer needed in FY 26 \$413,855 increase to four (4) existing grants \$324,000 increase for statewide acquisition adjustments

FY 26 EXPENDITURE RECOMMENDATION

Total Budget = \$95,927,087

Expenditure Category		
Salaries	\$	37,732,142
Other Compensation		1,783,007
Related Benefits		23,974,618
Travel		570,848
Operating Services		7,620,666
Supplies		6,624,752
Professional Services		1,295,219
Other Charges		3,550,246
Interagency Transfers		3,165,839
Acquisitions/Repairs		9,609,750
Total	\$	95,927,087



EXPENDITURE COMPARISON

Expenditure Category	FY 24 Actual Expenditures	FY 25 Existing Operating Budget 12/1/24	FY 26 HB1 Budget	Change Existing Operating Budget to HB1		Change Actual Expenditures to HB1	
Salaries	\$ 37,262,170	\$ 36,789,577	\$ 37,732,142	\$ 942,565	2.6%	\$ 469,972	1.3%
Other Compensation	1,823,695	1,783,007	1,783,007	0	0.0%	(40,688)	(2.2%)
Related Benefits	23,747,888	23,738,758	23,974,618	235,860	1.0%	226,730	1.0%
Travel	481,253	522,805	570,848	48,043	9.2%	89,595	18.6%
Operating Services	5,695,995	7,985,653	7,620,666	(364,987)	(4.6%)	1,924,671	33.8%
Supplies	5,454,140	6,510,499	6,624,752	114,253	1.8%	1,170,612	21.5%
Professional Services	179,087	1,320,219	1,295,219	(25,000)	(1.9%)	1,116,132	623.2%
Other Charges	11,500,804	23,005,199	3,550,246	(19,454,953)	(84.6%)	(7,950,558)	(69.1%)
Interagency Transfers	2,589,868	2,928,802	3,165,839	237,037	8.1%	575,971	22.2%
Acquisitions/Repairs	6,970,688	16,901,728	9,609,750	(7,291,978)	(43.1%)	2,639,062	37.9%
Total	\$ 95,705,588	\$ 121,486,247	\$ 95,927,087	\$ (25,559,160)	(21.0%)	\$ 221,499	0.2%

SIGNIFICANT EXPENDITURE CHANGES

Compared to the FY 25 Existing Operating Budget

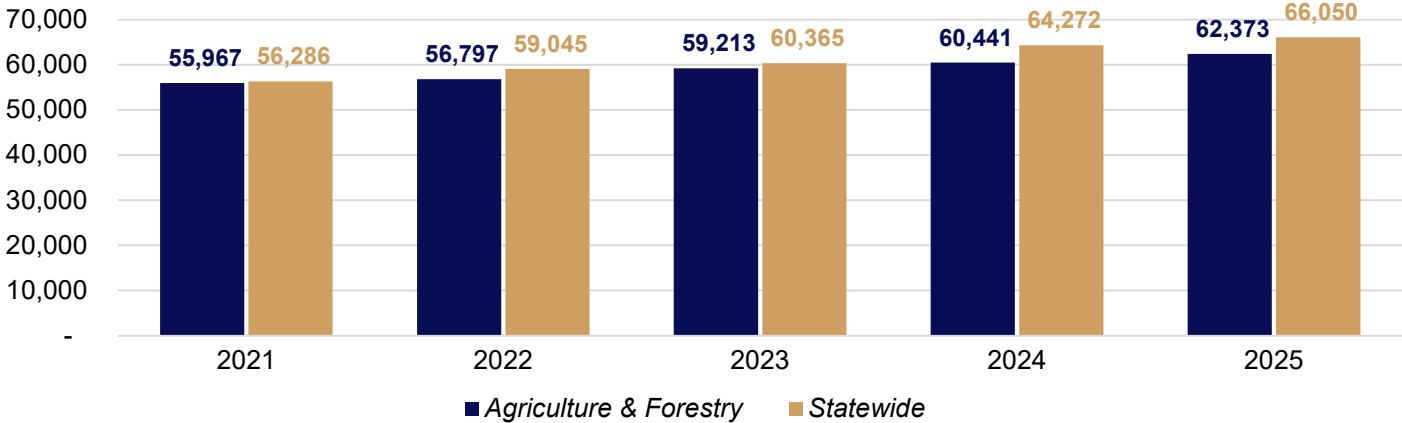
Personnel Services	Other Charges	Acquisitions/Repairs
<p>\$1.2 M net increase due to items such as:</p> <ul style="list-style-type: none">• \$1.6 M increase for various standard statewide adjustments to salaries including attrition, benefits, and retirement changes• (\$526,206) for removal of four (4) classified positions in the Office of Agricultural and Environmental Sciences	<p>(\$19.5 M) decrease due to items such as:</p> <ul style="list-style-type: none">• (\$15 M) to remove funding for other charges budgeted in FY 25 that are no longer needed in FY 26 for heat related emergencies• (\$4.5 M) decrease from the loss of one-time FEMA transfers from GOHSEP for assistance related to the 2023 wildfires	<p>(\$7.3 M) net decrease due to items such as:</p> <ul style="list-style-type: none">• \$9.5 M for replacement equipment including vehicles, plows, storage, and IT needs as well as repairs at multiple substations• (\$9.4 M) to remove funding for acquisition purchases and major repairs budgeted in FY 25 that are no longer needed in FY 26• (\$7.5 M) to remove funding for one-time expenses such as equipment, dozer repairs, maintenance on equipment and buildings

PERSONNEL INFORMATION

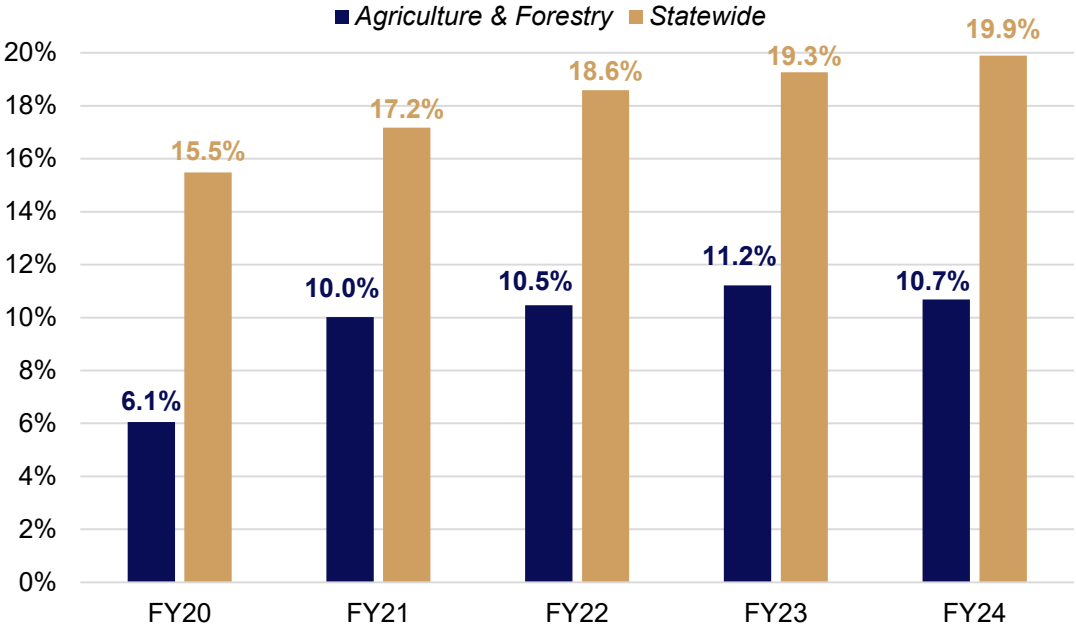
FY 2026 Recommended Positions

586	Total Authorized T.O. Positions (546 Classified, 40 Unclassified)
2	Authorized Other Charges Positions
42	Non-T.O. FTE Positions
19	Vacant Positions (December 30, 2024)

Historical Average Salary



Turnover History



Top Positions Vacated FY 2024

Position	Number of Employees	Separations	Turnover Rate
Forest Crew Specialist II	27	7	25.9%
Forest Crew Specialist Leader	50	5	10%
Agricultural Specialist II	14	5	35.7%
Forest Crew Specialist I	9	4	44.4%
Administrative Coordinator IV	25	4	16%

Source: Department of Civil Service

DEPARTMENT CONTACTS



Mike Strain
*Commissioner of
Agriculture and Forestry*

mstrain@ldaf.state.la.us

Brent Robbins

Deputy Commissioner
deputy.commissioner@ldaf.la.gov

Dane Morgan

*Assistant Commissioner of
Management and Finance*
dmorgan@ldaf.state.la.us

Rebecca Dupree

Deputy Undersecretary
rdupree@ldaf.state.la.us

General Department Information



Management and Finance

- Specifies, procures, and allocates resources necessary to support the mission of the department
- Prepares and implements budget
- Produces the Annual Financial Report for the department
- Manages department fleet maintenance and repairs
- Repairs and maintains all department properties and buildings
- Audits agricultural entities to ensure regulatory standards are met



Commodity Promotion and Research

- Administers promotion and research development programs that serve farmers and consumers through state trade shows, retail promotions, chef demonstrations, market research, development and implementation of promotion and research activities by commodity specific boards, a Senior Farmer's Market Nutrition Program, and WIC Farmer's Market Nutrition Program

Marketing

- Aims to expand opportunities for growth of the food and agricultural products industry through financial assistance, expansion, recruitment, and providing unbiased market information

Agricultural and Environmental Sciences

Horticulture & Quarantine Program

- Monitors and provides for the prevention, control, and eradication of regulated and exotic crop pests or diseases endangering Louisiana's food, fiber, forestry, horticultural, and apiary industries and the environment. Oversees the qualifications and practices of persons engaged in the green industry

Pesticide & Environmental Program

- Inspects, enforces, and regulates the registration, distribution, sale, offering for sale, and application of pesticides

Seed Program

- Ensures that seed sold for planting purposes meets seed label guarantees and quality standards. Enforces seed laws and regulations, manages the Seed Certification Program, and operates the state's official seed testing laboratory. This office is also tasked with regulation of the Industrial Hemp Program

Agricultural Chemistry Program

- Administers state laws and regulations which regulate the manufacturing and sale of animal feeds, pet foods, fertilizers, and agricultural liming materials. The Agricultural Chemistry Laboratory is responsible for analyzing agricultural chemicals and other farm input components as part of their regulatory enforcement. The lab will also test the Industrial Hemp plant for THC levels and the contents of the medical marijuana product before it goes to market



Animal Health & Food Safety

Livestock Brand Commission

- Investigates farm related crimes, including identification of livestock through registered brands and markings

Food Quality Services (FQS) Program

- Inspections for fresh fruits and vegetables grown in Louisiana

Louisiana Egg Commission

- Promotes eggs/egg products in Louisiana. Licenses all producers, packers, processors, wholesalers, and brokers

Veterinary Health Division

- Protects Louisiana livestock from infectious diseases by administering state and federal disease surveillance programs that include disease reporting, monitoring, investigation, diagnostics, containment, and eradication

Poultry & Egg Division

- Enforces state laws, rules, and regulations for egg and poultry production, packing, and sales and establishes grades for products sold in Louisiana

Meat & Poultry Inspection Program

- Cooperative state/federal inspection program to ensure safety and proper labeling of meat and poultry. Assures that products purchased by institutions and schools meet the Institutional Meat Purchasing Specifications and general requirements for fish and fishery products

Commercial Feed Program

- Responsible for regulating the manufacturing and distribution of livestock feeds, feed ingredients, & pet food to ensure all are safe for the health of animal and man

Food Distribution Program

- Ensures the USDA Commodities are distributed to eligible recipient agencies

Agro-Consumer Services



Weighmaster testing scale

Grain Commodity Program

- Inspectors grade agricultural commodities based on quality and condition

Moisture Meter Certification Program

- Certifies all moisture meters utilized in assessing grain moisture for discount purposes

Weights & Measures

- Inspect and test, on an annual basis, all weighing, measuring, metering, scanning, and packaging devices used commercially to ensure that equity prevails for buyers and sellers statewide. This includes motor fuels inspections

Dairy Stabilization board

- Provides a regulatory program designed to stabilize the dairy industry in order to assure an adequate supply of dairy products to consumers at a fair price

Milk Testing Program

- Works closely with other state-wide dairy groups to regulate and maintain volume measurement and butterfat testing of milk and cream

Forestry

Forestry Protection

- Includes detection, suppression, and prevention of wildfires on the forest lands of Louisiana
- Included in these objectives are community education, training, and outreach

Forestry Management

- Provides landowner assistance to ensure proper forest management practices
- These services include technical and practical assistance as well as administering landowner subsidy programs



Tiger Island Forest Fires in
Beauregard Parish

Soil & Water Conservation

Coastal Marsh Re-vegetation Planting Program

- Plan and implement vegetative planting for erosion control and restoration on private and public-owned coastal marshes

USDA-State Cooperative Soil Survey Program

- Ensures the availability of current scientific soils data and interpretive information for the development and application of effective conservation and environmental protection practices

Agricultural Nonpoint Source Pollution Control Program

- Implements site specific conservation and environmental protection plans within priority watersheds

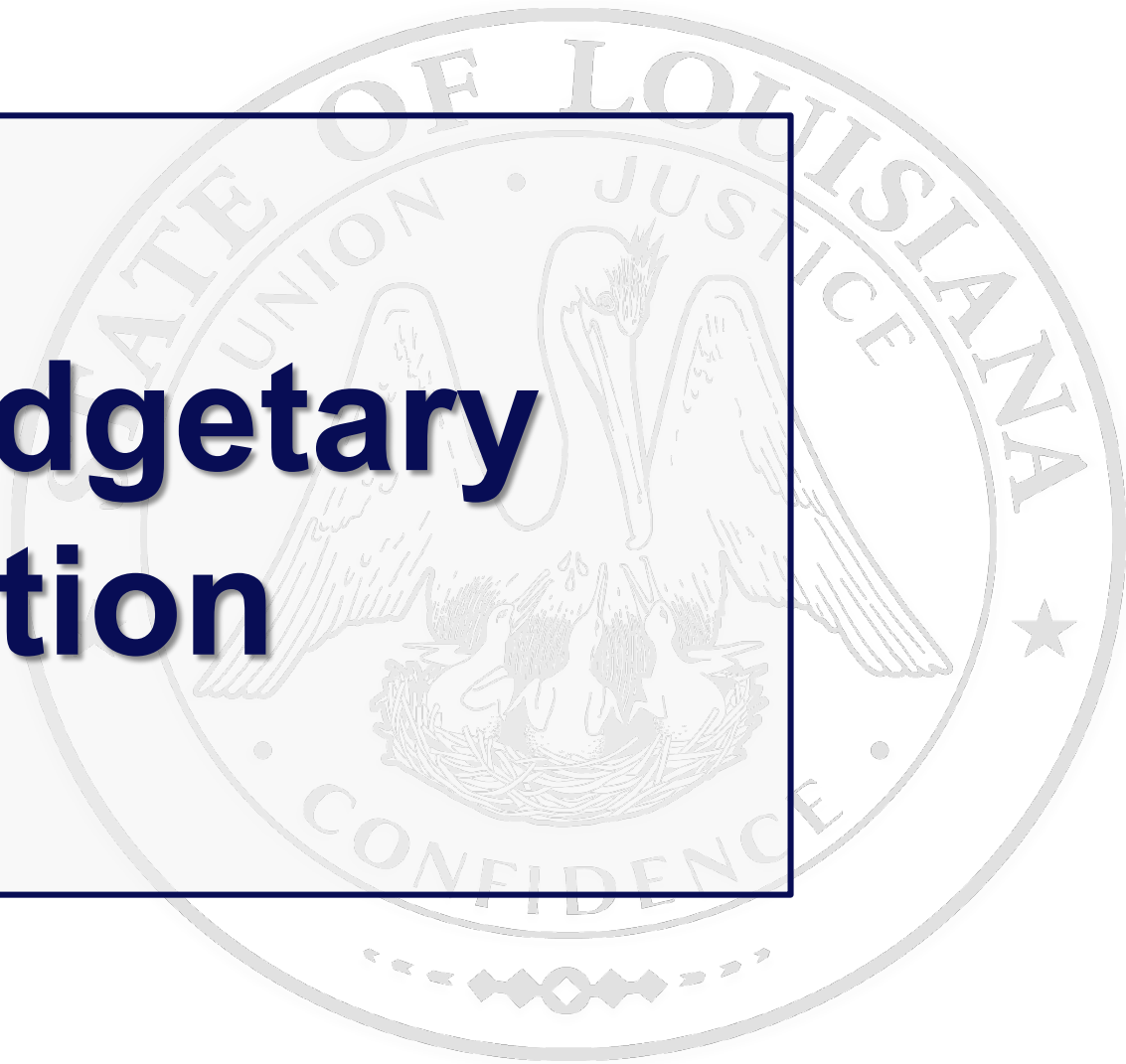
Agricultural Solid Waste Management Program

- Reduces cost of disposal of agricultural waste at regulated solid waste sites, increases beneficial use of most agricultural and forestry processing by-products for improving soil fertility and production and protects air and water quality

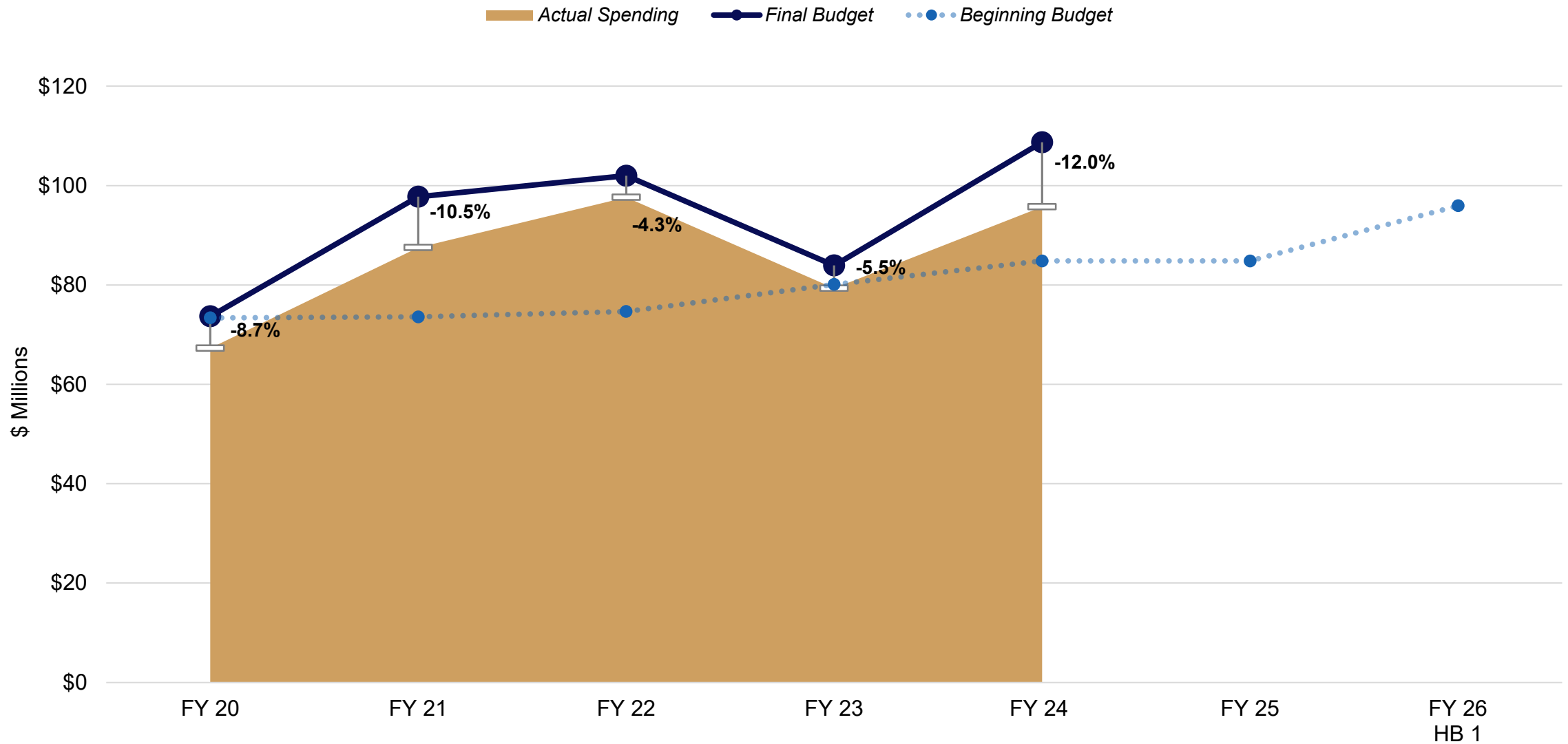
Information/Education Outreach Program

- Delivers quality standards-based conservation education materials and resources to classroom educators and students, communities, individuals, and agricultural producers throughout the state

General Budgetary Information



HISTORICAL BUDGET



FY 25 EXISTING OPERATING BUDGET

The FY 2024-25 Existing Operating Budget (EOB) was frozen on December 1, 2024. This point-in-time reference is used in both the Executive Budget and the General Appropriations Bill.

Means of Finance	Appropriation		Mid-Year Adjustments		Existing Operating Budget
General Fund	\$	26,029,615	\$	15,007,163	\$ 41,036,778
Interagency Transfers		537,345		5,299,802	5,837,147
Self-generated Revenue		8,253,309		0	8,253,309
Statutory Dedications		43,588,080		644,224	44,232,304
Federal		13,000,196		9,126,513	22,126,709
Total	\$	91,408,545	\$	30,077,702	\$ 121,486,247

Mid-year Adjustments Summary				
July	August	September	October	November
No change	\$29.1 M Various means of finance carried into FY 25 from the prior fiscal year for program expenses and contracts	No change	\$1 M IAT and Federal Funds increases to receive grants and to assist in hurricane relief efforts	No change

OTHER CHARGES / INTERAGENCY TRANSFERS

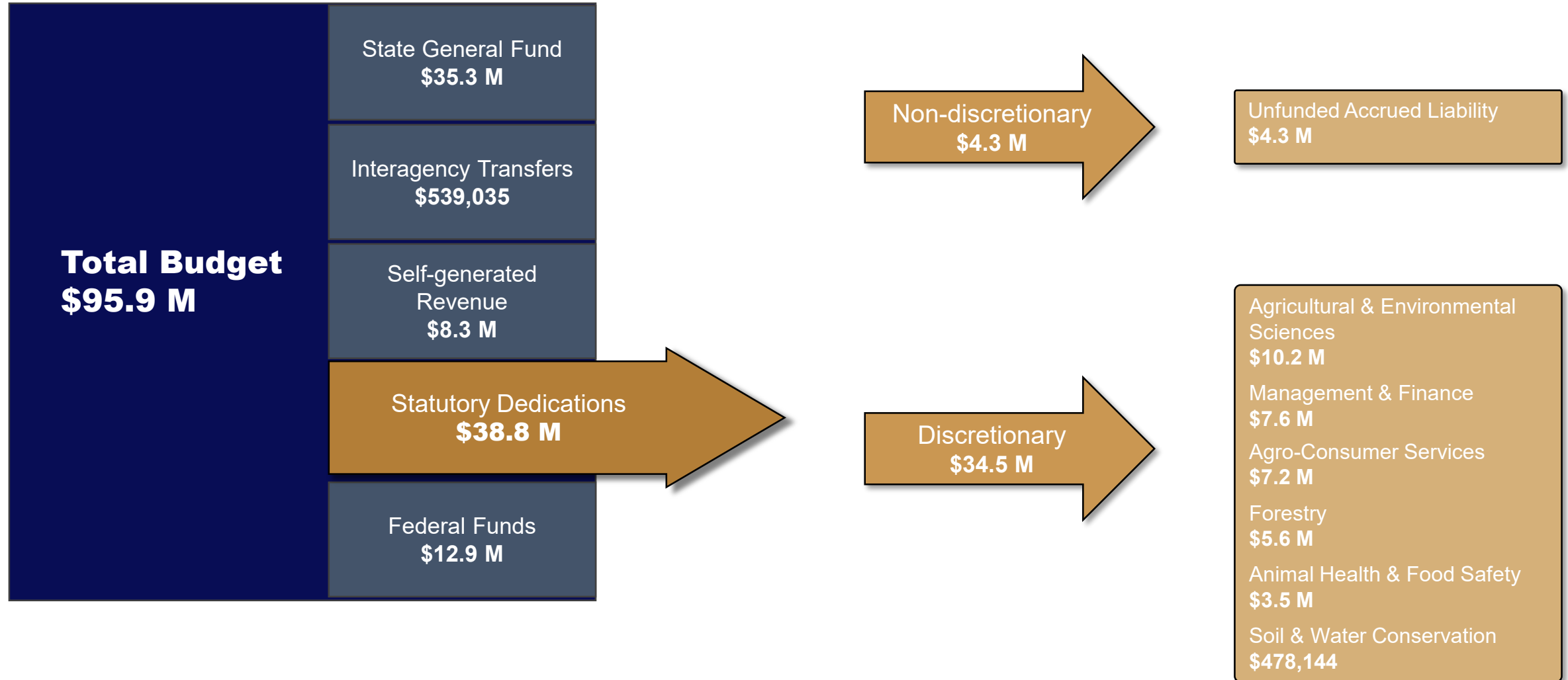
Other Charges

Amount	Description
\$ 1,075,473	Grant-related Expenses
1,052,336	Project activities for Non-Point 319, Farm Bill, and PSS programs
440,175	Operating Services for Fruit & Vegetable and Promotion & Research
324,371	Seniors and Women, Infants, and Children (WIC), Farmers Market Nutrition Program (FMNP) and Specialty Crop Block Grant recoupments
232,029	Boll Weevil Salaries and Related Benefits
153,753	Project activities for the Vegetative Planting Program
146,419	Forest Protection contracts, operating services, and supplies
125,690	Project activities for Watershed Technician Program
\$ 3,550,246	Total Other Charges

Interagency Transfers

Amount	Description
\$ 2,270,761	Office of Risk Management (ORM) Premiums
470,265	Office of Technology Services (OTS)
228,198	Civil Service Fees
101,897	Legislative Auditor Fees
31,942	Uniform Payroll System (UPS) Fees
20,425	Office of State Procurement (OSP)
18,019	Department of Environmental Quality (DEQ)
17,500	Office of State Register
6,832	State Treasury Fees
\$ 3,165,839	Total Interagency Transfers

DISCRETIONARY EXPENSES



* Figures may not add precisely due to rounding *

DEDICATED FUNDS

Fund Name	Source	Usage	FY 25 - EOB	FY 26 - HB1
Louisiana Agricultural Finance Authority Fund	(R.S. 3:277) - Transfers from the Pari Mutuel Live Racing Control Fund	Provides for administrative costs throughout the department	\$16,801,326	\$11,801,326
Pesticide Fund	(R.S. 3:3210) - Fees collected from permits, registration, and penalties for pesticides	Licensing, monitoring, and enforcement of the pesticide program	\$6,443,316	\$6,320,172
Petroleum Products Fund	(R.S. 3:4685) - Assessments, fees, and penalties pertaining to the inspection of petroleum products	Costs related to the inspection, regulation, and analysis of petroleum products, any commercial weighing or measuring device used in the distribution, handling or sale of petroleum products	\$4,766,510	\$4,833,388
Weights & Measures Fund	(R.S. 3:4622) - Registration fees from commercial weighting and measuring devices	Expenses of the Weights and Measures activities and programs, including personnel	\$3,330,670	\$3,246,289
Feed and Fertilizer Fund	(R.S. 3:1407) - Fees from registration and filing a label with the commissioner of agriculture	Expenses of the offices of agricultural and environmental sciences and animal health and food safety	\$2,838,323	\$2,838,323
Horticulture and Quarantine Fund	(R.S. 3:1655) - Fees for inspecting nursery stock grown or propagated for sale or distribution	Costs related to the control of crop pests and diseases	\$2,600,000	\$2,600,000
Agricultural Commodity Dealers & Warehouse Fund	(R.S. 3:3423) - Sale of licenses which are required prior to engaging in business of buying or selling agricultural commodities	To carry out the duties of the Agricultural Commodity Dealers and Warehouse Commission	\$2,211,591	\$2,215,591
Structural Pest Control Commission Fund	(R.S. 3:3375) - Fees received from wood destroying insect reports	For research through the AgCenter and expenses of the Commission	\$1,552,031	\$1,552,031

DEDICATED FUNDS

Fund Name	Source	Usage	FY 24 - EOB	FY 25 - HB1
Seed Commission Fund	(R.S. 3:1449) - Regulatory fee collected on all seed sold in the state	Activities and expenses of the Seed Commission, including Hemp licensing and testing	\$1,126,313	\$1,126,313
Wildfire Suppression Subfund	(R.S. 3:4321) - Portion of the timber severance tax	Personnel, equipment, and supplies for the Forestry program	\$875,000	\$875,000
Forest Protection Fund	(R.S. 3:4321) - Funding from the Forest Protection Tax of \$0.08 per acre of timberland in the state	For the repairs and maintenance of fire suppression equipment	\$1,087,224	\$820,000
Forest Productivity Fund	(R.S. 3:4411) - Funds equal to 75% of the severance tax on timber received by the state	Implementation of the forestry productivity program, including the amount representing the state's involvement in cooperative agreements between landowners and the department for the implementation of approved practices for the reforestation of forest lands	\$350,000	\$350,000
Sweet Potato Pests & Diseases Fund	(R.S. 3:1736.6) - \$0.06 per bushel on every bushel of potatoes moved or shipped within the state and up to \$0.10 per thousand on all vines, plants, and slips	Implementation of sweet potato disease prevention programs	\$200,000	\$200,000
Livestock Brand Commission Fund	(R.S. 3:749) - Fees for brand recordation, renewal or transfer	Expenses of the Livestock Brand Commission activities and programs, including personnel	\$50,000	\$25,000
Total			\$44,232,304	\$38,803,433